

LINKSYS®

A Division of Cisco Systems, Inc.



Wireless-G

Broadband Router

User Guide

WIRELESS

Model No. **WRT54GL (EU/LA)**

CISCO SYSTEMS



Copyright and Trademarks

Specifications are subject to change without notice. Linksys is a registered trademark or trademark of Cisco Systems, Inc. and/or its affiliates in the U.S. and certain other countries. Copyright © 2005 Cisco Systems, Inc. All rights reserved. Other brands and product names are trademarks or registered trademarks of their respective holders.

How to Use This User Guide

This User Guide has been designed to make understanding networking with the Wireless-G Broadband Router easier than ever. Look for the following items when reading this User Guide:



This checkmark means there is a note of interest and is something you should pay special attention to while using the Wireless-G Broadband Router.



This exclamation point means there is a caution or warning and is something that could damage your property or the Wireless-G Broadband Router.



This question mark provides you with a reminder about something you might need to do while using the Wireless-G Broadband Router.

In addition to these symbols, there are definitions for technical terms that are presented like this:

word: definition.

Also, each figure (diagram, screenshot, or other image) is provided with a figure number and description, like this:

Figure 0-1: Sample Figure Description

Figure numbers and descriptions can also be found in the “List of Figures” section in the “Table of Contents”.

Table of Contents

Chapter 1: Introduction	1
Welcome	1
What's in this User Guide?	2
Chapter 2: Planning Your Wireless Network	4
Network Topology	4
Ad-Hoc versus Infrastructure Mode	4
Network Layout	4
Chapter 3: Getting to Know the Wireless-G Broadband Router	6
The Back Panel	6
The Front Panel	7
Chapter 4: Connecting the Wireless-G Broadband Router	8
Overview	8
Hardware Installation for Connection to Your Broadband Modem	8
Hardware Installation for Connection to Another Router	10
Chapter 5: Setting up the Wireless-G Broadband Router	12
Overview	12
Using the Setup Wizard	12
Using SecureEasySetup to Configure Your Notebook	29
Chapter 6: Configuring the Wireless-G Broadband Router	32
Overview	32
The Setup Tab - Basic Setup	33
The Setup Tab - DDNS	37
The Setup Tab - MAC Address Clone	38
The Setup Tab - Advanced Routing	39
The Wireless Tab - Basic Wireless Settings	40
The Wireless Tab - Wireless Security	41
The Wireless Tab - Wireless MAC Filter	44
The Wireless Tab - Advanced Wireless Settings	45
The Security Tab - Firewall	47
The Security Tab - VPN Passthrough	47
The Access Restrictions Tab - Internet Access	48
The Applications and Gaming Tab - Port Range Forward	50

The Applications & Gaming Tab - Port Triggering	51
The Applications and Gaming Tab - DMZ	52
The Applications and Gaming Tab - QoS	52
The Administration Tab - Management	54
The Administration Tab - Log	54
The Administration Tab - Diagnostics	55
The Administration Tab - Factory Defaults	56
The Administration Tab - Firmware Upgrade	56
The Administration Tab - Config Management	56
The Status Tab - Router	57
The Status Tab - Local Network	58
The Status Tab - Wireless	59
Appendix A: Troubleshooting	60
Common Problems and Solutions	60
Frequently Asked Questions	68
Appendix B: Wireless Security	75
Security Precautions	75
Security Threats Facing Wireless Networks	75
Appendix C: Upgrading Firmware	78
Appendix D: Windows Help	79
Appendix E: Finding the MAC Address and IP Address for Your Ethernet Adapter	80
Windows 98SE or Me Instructions	80
Windows 2000 or XP Instructions	80
For the Router's Web-based Utility	81
Appendix F: Glossary	82
Appendix G: Specifications	89
Appendix H: Warranty Information	91
Appendix I: Regulatory Information	92
Appendix J: Contact Information	97

List of Figures

Figure 3-1: The Router's Back Panel	6
Figure 3-2: The Router's Front Panel	7
Figure 4-1: Connecting Your Internet Connection	8
Figure 4-2: Connecting Your Network Devices	9
Figure 4-3: Connecting the Power	9
Figure 4-4: Diagram for Connection to Another Router	10
Figure 4-5: Connecting Another Router	10
Figure 4-6: Connecting Your Network Devices	11
Figure 4-7: Connecting the Power	11
Figure 5-1: Setup Wizard's Welcome - Language Selection Screen	12
Figure 5-2: Setup Wizard's Welcome - Start Wizard Screen	12
Figure 5-3: Setup Wizard's License Agreement Screen	13
Figure 5-4: Setup Wizard's Disconnect the Modem from the PC Screen	13
Figure 5-5: Setup Wizard's Connect the Modem to the Router Screen	14
Figure 5-6: Setup Wizard's Connect a Network Cable to a PC Screen	14
Figure 5-7: Setup Wizard's Connect the Network Cable to the Router Screen	15
Figure 5-8: Setup Wizard's Power on the Router Screen	15
Figure 5-9: Setup Wizard's Check the Router's Status Screen	16
Figure 5-10: Setup Wizard's Configure Cable or DHCP Settings Screen	16
Figure 5-11: Setup Wizard's Configure DSL (PPPoE) Settings Screen	17
Figure 5-12: Setup Wizard's Advanced Internet Settings - Static IP Screen	17
Figure 5-13: Setup Wizard's Advanced Internet Settings - PPTP Screen	18
Figure 5-14: Setup Wizard's Keep Alive/Connect on Demand (PPTP Continued) Screen	18
Figure 5-15: Setup Wizard's Advanced Internet Settings - L2TP Screen	19
Figure 5-16: Setup Wizard's Advanced Internet Settings - Telstra Screen	20
Figure 5-17: Setup Wizard's Set the Router's Password Screen	21
Figure 5-18: Setup Wizard's Configure Wireless Settings Screen	21
Figure 5-19: Setup Wizard's SecureEasySetup Screen	22
Figure 5-20: SecureEasySetup Logo	22
Figure 5-21: Additional Information - Hardware Button	22
Figure 5-22: Additional Information - Software Button	22

Figure 5-23: Setup Wizard's Configure Wireless Settings Screen	23
Figure 5-24: Setup Wizard's Confirm New Settings Screen	23
Figure 5-25: Setup Wizard's Safe Surfing Screen	24
Figure 5-26: Setup Wizard's Congratulations Screen	24
Figure 5-27: Setup Wizard's Configure Wireless Settings Screen	25
Figure 5-28: Setup Wizard's Wireless Settings Screen	25
Figure 5-29: Setup Wizard's Wireless Security - WPA-PSK Screen	26
Figure 5-30: Setup Wizard's Wireless Security - WEP (64-Bit) Screen	27
Figure 5-31: Setup Wizard's Confirm New Settings Screen	27
Figure 5-32: Setup Wizard's Norton Screen	28
Figure 5-33: Setup Wizard's Congratulations Screen	28
Figure 5-34: Setup Wizard's Welcome - Start Wizard Screen	29
Figure 5-35: SecureEasySetup Welcome Screen	29
Figure 5-36: Configure Wireless Settings #1 Screen	30
Figure 5-37: Configure Wireless Settings #2 Screen	30
Figure 5-38: Your Wireless Settings Screen	31
Figure 6-1: Password Screen	32
Figure 6-2: Setup Tab - Basic Setup	33
Figure 6-3: DHCP Connection Type	33
Figure 6-4: Static IP Connection Type	33
Figure 6-5: PPPoE Connection Type	34
Figure 6-6: PPTP Connection Type	34
Figure 6-7: HeartBeat Signal Connection Type	35
Figure 6-8: Optional Settings	35
Figure 6-9: Router IP	36
Figure 6-10: Network Address Server Settings	36
Figure 6-11: Time Setting	36
Figure 6-12: Setup Tab - DDNS	37
Figure 6-13: Setup Tab - MAC Address Clone	38
Figure 6-14: Setup Tab - Advanced Routing (Gateway)	39
Figure 6-15: Setup Tab - Advanced Routing (Router)	39
Figure 6-16: Wireless Tab - Basic Wireless Settings	40
Figure 6-17: Wireless Tab - Wireless Security (WPA Personal)	41
Figure 6-18: Wireless Tab - Wireless Security (WPA Enterprise)	41

Figure 6-19: Wireless Tab - Wireless Security (WPA2 Personal)	42
Figure 6-20: Wireless Tab - Wireless Security (WPA2 Enterprise)	42
Figure 6-21: Wireless Tab - Wireless Security (RADIUS)	43
Figure 6-22: Wireless Tab - Wireless Security (WEP)	43
Figure 6-23: Wireless Tab - Wireless MAC Filter	44
Figure 6-24: MAC Address Filter List	44
Figure 6-25: Wireless Tab - Advanced Wireless Settings	45
Figure 6-26: Security Tab - Firewall	47
Figure 6-27: Security Tab - VPN Passthrough	47
Figure 6-28: Access Restrictions Tab - Internet Access	48
Figure 6-29: Internet Policy Summary	48
Figure 6-30: List of PCs	48
Figure 6-31: Port Services	49
Figure 6-32: Access Restrictions Tab - Inbound Traffic	49
Figure 6-33: Applications and Gaming Tab - Port Range Forward	50
Figure 6-34: Applications and Gaming Tab - Port Triggering	51
Figure 6-35: Applications and Gaming Tab - DMZ	52
Figure 6-36: Applications and Gaming Tab - QOS	52
Figure 6-37: Administration Tab - Management	54
Figure 6-38: Administration Tab - Log	54
Figure 6-39: Administration Tab - Diagnostics	55
Figure 6-40: The Ping Test	55
Figure 6-41: The Traceroute Test	55
Figure 6-42: Administration Tab - Factory Defaults	56
Figure 6-43: Administration Tab - Firmware Upgrade	56
Figure 6-44: Administration Tab - Config Management	56
Figure 6-45: Status Tab - Router	57
Figure 6-46: Status Tab - Local Network	58
Figure 6-47: DHCP Clients Table	58
Figure 6-48: Status Tab - Wireless	59
Figure C-1: Upgrade Firmware	78
Figure E-1: IP Configuration Screen	80
Figure E-2: MAC Address/Adapter Address	80
Figure E-3: MAC Address/Physical Address	80
Figure E-4: MAC Address Filter List	81

Figure E-5: MAC Address Clone

Chapter 1: Introduction

Welcome

Thank you for choosing the Linksys Wireless-G Broadband Router. The Wireless-G Broadband Router will allow you to network wirelessly better than ever, sharing Internet access, files and fun, easily and securely.

How does the Wireless-G Broadband Router do all of this? A router is a device that allows access to an Internet connection over a network. With the Wireless-G Broadband Router, this access can be shared over the four switched ports or via the wireless broadcast at up to 11Mbps for Wireless-B or up to 54Mbps for Wireless-G.

Use the WPA standard to secure your wireless network while the whole network is protected through a Stateful Packet Inspection (SPI) firewall and Network Address Translation (NAT) technology. The Router's SecureEasySetup™ feature makes it a snap to set up WPA when you have other SecureEasySetup devices—notebooks, printers, other peripherals—comprising your network. Run the Setup Wizard and it will guide you through the steps. You can also access the Router's features through the easy-to-use, browser-based utility.

But what does all of this mean?

Networks are useful tools for sharing computer resources. You can access one printer from different computers and access data located on another computer's hard drive. Networks are even used for playing multiplayer video games. So, networks are not only useful in homes and offices, they can also be fun.

PCs on a wired network create a LAN, or Local Area Network. They are connected with Ethernet cables, which is why the network is called "wired".

PCs equipped with wireless cards or adapters can communicate without cumbersome cables. By sharing the same wireless settings, within their transmission radius, they form a wireless network. This is sometimes called a WLAN, or Wireless Local Area Network. The Wireless-G Broadband Router bridges wireless networks of both 802.11b and 802.11g standards and wired networks, allowing them to communicate with each other.

With your networks all connected, wired, wireless, and the Internet, you can now share files and Internet access—and even play games. All the while, the Wireless-G Broadband Router protects your networks from unauthorized and unwelcome users.

Linksys recommends using the Setup CD-ROM for first-time installation of the Router. If you do not wish to run the Setup Wizard on the Setup CD-ROM, then use the instructions in this Guide to help you connect the Wireless-G Broadband Router, set it up, and configure it to bridge your different networks. These instructions should be all you need to get the most out of the Wireless-G Broadband Router.

wpa (*wi-fi protected access*): a wireless security protocol using TKIP (Temporal Key Integrity Protocol) encryption, which can be used in conjunction with a RADIUS server.

spi (*stateful packet inspection*) **firewall**: a technology that inspects incoming packets of information before allowing them to enter the network.

firewall: Security measures that protect the resources of a local network from intruders.

nat (*network address translation*): NAT technology translates IP addresses of a local area network to a different IP address for the Internet.

lan (*local area network*): The computers and networking products that make up the network in your home or office.

What's in this User Guide?

This user guide covers the steps for setting up and using the Wireless-G Broadband Router.

- **Chapter 1: Introduction**
This chapter describes the Router's applications and this User Guide.
- **Chapter 2: Planning Your Wireless Network**
This chapter describes the basics of wireless networking.
- **Chapter 3: Getting to Know the Wireless-G Broadband Router**
This chapter describes the physical features of the Router.
- **Chapter 4: Connecting the Wireless-G Broadband Router**
This chapter instructs you on how to connect the Router to your network.
- **Chapter 5: Setting up the Wireless-G Broadband Router**
This chapter walks you through the steps of the Wireless-G Broadband Router's Setup Wizard to configure its settings. It also covers the instructions for using the Router's SecureEasySetup feature to create your wireless network.
- **Chapter 6: Configuring the Wireless-G Broadband Router**
This chapter explains how to use the Web-based Utility to configure the settings on the Wireless-G Broadband Router.
- **Appendix A: Troubleshooting**
This appendix describes some problems and solutions, as well as frequently asked questions, regarding installation and use of the Wireless-G Broadband Router.
- **Appendix B: Wireless Security**
This appendix explains the risks of wireless networking and some solutions to reduce the risks.
- **Appendix C: Upgrading Firmware**
This appendix instructs you on how to upgrade the firmware on the Router should you need to do so.
- **Appendix D: Windows Help**
This appendix describes how you can use Windows Help for instructions about networking, such as installing the TCP/IP protocol.

Wireless-G Broadband Router

- **Appendix E: Finding the MAC Address and IP Address for your Ethernet Adapter.**
This appendix describes how to find the MAC address for your computer's Ethernet adapter so you can use the MAC filtering and/or MAC address cloning feature of the Router.
- **Appendix F: Glossary**
This appendix gives a brief glossary of terms frequently used in networking.
- **Appendix G: Specifications**
This appendix provides the technical specifications for the Router.
- **Appendix H: Warranty Information**
This appendix supplies the warranty information for the Router.
- **Appendix I: Regulatory Information**
This appendix supplies the regulatory information regarding the Router.
- **Appendix J: Contact Information**
This appendix provides contact information for a variety of Linksys resources, including Technical Support.

Chapter 2: Planning Your Wireless Network

Network Topology

A wireless local area network (WLAN) is exactly like a regular local area network (LAN), except that each computer in the WLAN uses a wireless device to connect to the network. Computers in a WLAN share the same frequency channel and SSID, which is an identification name shared by the wireless devices belonging to the same wireless network.

ssid (service set identifier): your wireless network's name.

Ad-Hoc versus Infrastructure Mode

Unlike wired networks, wireless networks have two different modes in which they may be set up: infrastructure and ad-hoc. An infrastructure configuration is a WLAN and wired LAN communicating to each other through an access point. An ad-hoc configuration is wireless-equipped computers communicating directly with each other. Choosing between these two modes depends on whether or not the wireless network needs to share data or peripherals with a wired network or not.

infrastructure: a wireless network that is bridged to a wired network via an access point.

If the computers on the wireless network need to be accessible by a wired network or need to share a peripheral, such as a printer, with the wired network computers, the wireless network should be set up in Infrastructure mode. The basis of Infrastructure mode centers around a wireless router or an access point, such as the Wireless-G Broadband Router, which serves as the main point of communications in a wireless network. The Router transmits data to PCs equipped with wireless network adapters, which can roam within a certain radial range of the Router. You can arrange the Router and multiple access points to work in succession to extend the roaming range, and you can set up your wireless network to communicate with your Ethernet hardware as well.

ad-hoc: a group of wireless devices communicating directly to each other (peer-to-peer) without the use of an access point.

If the wireless network is relatively small and needs to share resources only with the other computers on the wireless network, then the Ad-Hoc mode can be used. Ad-Hoc mode allows computers equipped with wireless transmitters and receivers to communicate directly with each other, eliminating the need for a wireless router or access point. The drawback of this mode is that in Ad-Hoc mode, wireless-equipped computers are not able to communicate with computers on a wired network. And, of course, communication between the wireless-equipped computers is limited by the distance and interference directly between them.

Network Layout

The Wireless-G Broadband Router has been specifically designed for use with both your 802.11b and 802.11g products. Now, products using these standards can communicate with each other.

Wireless-G Broadband Router

The Wireless-G Broadband Router is compatible with all 802.11b and 802.11g adapters, such as the Notebook Adapters (WPC54G, WPC11) for your laptop computers, PCI Adapter (WMP54G, WMP11) for your desktop PC, and USB Adapter (WUSB54G, WUSB11) when you want to enjoy USB connectivity. The Broadband Router will also communicate with the Wireless PrintServer (WPS54G) and Wireless Ethernet Bridges (WET54G, WET11).

When you wish to connect your wireless network with your wired network, you can use the Wireless-G Broadband Router's four LAN ports. To add more ports, any of the Wireless-G Broadband Router's LAN ports can be connected to any of Linksys's switches (such as the SD205 or SD208).

With these, and many other, Linksys products, your networking options are limitless. Go to the Linksys website at www.linksys.com/international for more information about products that work with the Wireless-G Broadband Router.

Chapter 3: Getting to Know the Wireless-G Broadband Router

The Back Panel

The Router's ports, where the cables are connected, are located on the back panel.



Figure 3-1: The Router's Back Panel



IMPORTANT: Resetting the Router will erase all of your settings (Internet connection, wireless security, and other settings) and replace them with the factory defaults. Do not reset the Router if you want to retain these settings.

- Reset Button** There are two ways to reset the Router's factory defaults. Either press the **Reset Button**, for approximately five seconds, or restore the defaults from the Administration tab - Factory Defaults in the Router's Web-based Utility.
- Internet** The **Internet** port is where you will connect your broadband Internet connection.
- 1, 2, 3, 4** These ports (1, 2, 3, 4) connect the Router to your networked PCs and other Ethernet network devices.
- Power** The **Power** port is where you will connect the power adapter.

The Front Panel

The Router's SecureEasySetup button (the Cisco logo) and LEDs are located on the front panel.



Figure 3-2: The Router's Front Panel

(Cisco logo) Orange/White. The Cisco logo is the Router's SecureEasySetup button. It lights up and will stay orange when the Router is powered on. The color orange indicates that the Router is not using the SecureEasySetup feature, while the color white indicates that the Router is using the SecureEasySetup feature. When the Router enters SecureEasySetup mode, the Cisco logo will turn white and start flashing. After the Router has generated the SSID and WPA-PSK (also called WPA-Personal) key, the Cisco logo will stop flashing and stay white.



NOTE: SecureEasySetup is a feature that makes it easy to set up your wireless network. If you have SecureEasySetup devices, run the Router's Setup Wizard CD-ROM and follow the on-screen instructions to use SecureEasySetup.

To clear the SSID and WPA-PSK key, press and hold down the Cisco logo for five seconds. The Cisco logo will flash slowly as the Router resets itself. The Cisco logo will turn orange to indicate a successful reset.

Power Green. The **Power** LED lights up and will stay on while the Router is powered on. When the Router goes through its self-diagnostic mode during every boot-up, this LED will flash. When the diagnostic is complete, the LED will be solidly lit.

DMZ Green. The **DMZ** LED indicates when the DMZ function is being used. This LED will remain lit as long as DMZ is enabled.

WLAN Green. The **WLAN** LED lights up whenever there is a successful wireless connection. If the LED is flashing, the Router is actively sending or receiving data over the network.

1, 2, 3, 4 Green. These numbered LEDs, corresponding with the numbered ports on the Router's back panel, serve two purposes. If the LED is continuously lit, the Router is successfully connected to a device through that port. A flashing LED indicates network activity over that port.

Internet Green. The **Internet** LED lights up when there is a connection made through the Internet port.

Chapter 4: Connecting the Wireless-G Broadband Router

Overview

This chapter includes two sets of instructions. If the Wireless-G Broadband Router will be the only router in your network, follow the instructions in “Hardware Installation for Connection to Your Broadband Modem.” If you want to install the Wireless-G Broadband Router behind another router in your network, then follow the instructions in “Hardware Installation for Connection to Another Router.”

Hardware Installation for Connection to Your Broadband Modem

1. Power down your network devices.
2. Locate an optimum location for the Router. The best place for the Router is usually at the center of your wireless network, with line of sight to all of your mobile stations.
3. Fix the direction of the antennas. Try to place the Router in a position that will best cover your wireless network. Normally, the higher you place the antenna, the better the performance will be.
4. Connect a standard Ethernet network cable to the Router’s Internet port. Then, connect the other end of the Ethernet cable to your cable or DSL broadband modem.



Figure 4-1: Connecting Your Internet Connection

Wireless-G Broadband Router

5. Connect your network PCs or Ethernet devices to the Router's numbered ports using standard Ethernet network cabling.



Figure 4-2: Connecting Your Network Devices

6. Connect the AC power adapter to the Router's Power port and the other end into an electrical outlet. Only use the power adapter supplied with the Router. Use of a different adapter may result in product damage.



IMPORTANT: Make sure you use the power adapter that is supplied with the Router. Use of a different power adapter could damage the Router.



Figure 4-3: Connecting the Power

Now that the hardware installation is complete, proceed to “Chapter 5: Setting up the Wireless-G Broadband Router,” for directions on how to configure the Router using the Setup Wizard (this chapter has covered the instructions up to Step 7 in the Wizard).

To set up the Router using its Web-based Utility, proceed to “Chapter 6: Configuring the Wireless-G Broadband Router”.

Hardware Installation for Connection to Another Router

Before you install the Router, you must change the default IP address of the other router. This is mandatory because both routers may be set to the same IP address by default. If you do not change the other router's default IP address, then you may not be able to set up the Router.

First, make sure the Router is NOT connected to your network. Then follow these instructions:

1. To access the other router's Web-based Utility, launch Internet Explorer or Netscape Navigator, and enter the other router's default IP address, **192.168.1.1**, in the *Address* field. Then press **Enter**.
2. A password request page will appear. Leave the *User Name* field blank. In the *Password* field, enter the password you have set (the default password is **admin**). Then click the **OK** button.
3. The first screen that appears will display the Setup tab. In the *Network Setup* section, there is a setting called *Local IP Address*, which is set to 192.168.1.1. Change this to **192.168.2.1**.
4. Click the **Save Settings** button to save your change, and then exit the Web-based Utility.
5. Power down your network devices. Now you will begin the hardware installation of Router.
6. Locate an optimum location for the Router. The best place for the Router is usually at the center of your wireless network, with line of sight to all of your mobile stations.
7. Fix the direction of the antennas. Try to place the Router in a position that will best cover your wireless network. Normally, the higher you place the antenna, the better the performance will be.
8. Connect a standard Ethernet network cable to the Router's Internet port. Then, connect the other end of the Ethernet cable to one of the numbered Ethernet ports on your other router.



Figure 4-5: Connecting Another Router



NOTE: Steps 1-4 are instructions for a typical Linksys router; however, if you are using a non-Linksys router, refer to the other router's documentation for instructions on how to change its local IP address to 192.168.2.1.

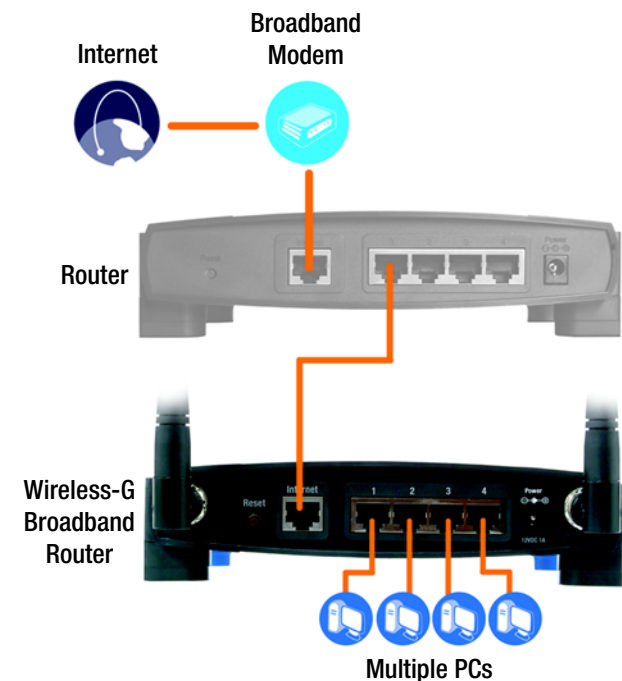


Figure 4-4: Diagram for Connection to Another Router

Wireless-G Broadband Router

9. Decide which network computers or Ethernet devices you want to connect to the Router.

Disconnect the selected computers or devices from the other router, and then connect them to the Router's numbered ports using standard Ethernet network cabling.



Figure 4-6: Connecting Your Network Devices

10. Connect the AC power adapter to the Router's Power port and the other end into an electrical outlet. Only use the power adapter supplied with the Router. Use of a different adapter may result in product damage.



Figure 4-7: Connecting the Power



IMPORTANT: Make sure you use the power adapter that is supplied with the Router. Use of a different power adapter could damage the Router.

Now that the hardware installation is complete, proceed to “Chapter 5: Setting up the Wireless-G Broadband Router,” for directions on how to configure the Router using the Setup Wizard (this chapter has covered the instructions up to Step 7 in the Wizard).

To set up the Router using its Web-based Utility, proceed to “Chapter 6: Configuring the Wireless-G Broadband Router”.

Chapter 5: Setting up the Wireless-G Broadband Router

Overview

The Wireless-G Broadband Router Setup Wizard will guide you through the installation procedure. It will go through the instructions for configuring the Router's network and wireless settings.

Using the Setup Wizard

1. Insert the **Setup Wizard CD-ROM** into your CD-ROM drive. The Setup Wizard should run automatically, and the *Welcome* screen should appear. If it does not, click the **Start** button and choose **Run**. In the field that appears, enter **D:\setup.exe** (if "D" is the letter of your CD-ROM drive).
2. The Setup Wizard will automatically detect the language setting of your PC. On the initial *Welcome* screen, click the **Next** button if you want to proceed with the Setup Wizard using the current language. If you want to use a different language, select the appropriate language, and then click the **Next** button.
3. On the following *Welcome* screen, click the **Click Here to Start** button if this is the first time you are running the Setup Wizard. These are your other choices:

Wireless Setup - If you have a computer displaying the SecureEasySetup logo, then click **Wireless Setup** and proceed to the section at the end of this chapter, "Using SecureEasySetup to Configure Your Notebook."



NOTE: SecureEasySetup uses WPA-Personal encryption. If your current wireless devices do not support WPA-Personal security, then you cannot use SecureEasySetup on your network. You will need to manually configure your network security using the encryption supported by your existing devices.

Norton Internet Security - Click the **Norton Internet Security** button to install the Norton Internet Security software program.

User Guide - Click the **User Guide** button to open the PDF file of this User Guide.

Exit - Click the **Exit** button to exit the Setup Wizard.



Figure 5-1: Setup Wizard's Welcome - Language Selection Screen



Figure 5-2: Setup Wizard's Welcome - Start Wizard Screen

Wireless-G Broadband Router

4. After reading the License Agreement, click the **Next** button if you accept, or click the **Cancel** button to end the installation.

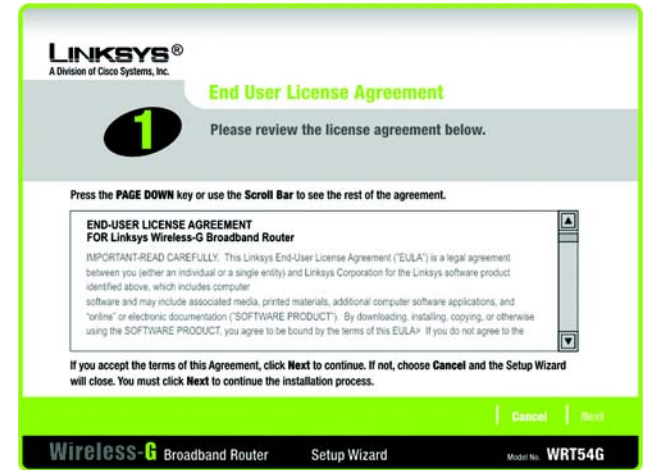


Figure 5-3: Setup Wizard's License Agreement Screen

5. The Setup Wizard will ask you to disconnect your broadband modem from your PC. After you have done so, click the **Next** button.

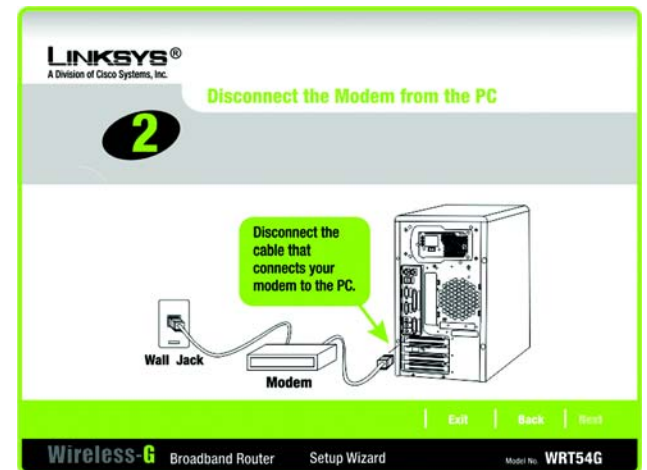


Figure 5-4: Setup Wizard's Disconnect the Modem from the PC Screen

Wireless-G Broadband Router

- The Setup Wizard will ask you to connect your broadband modem to the Router. After you have done so, click the **Next** button.

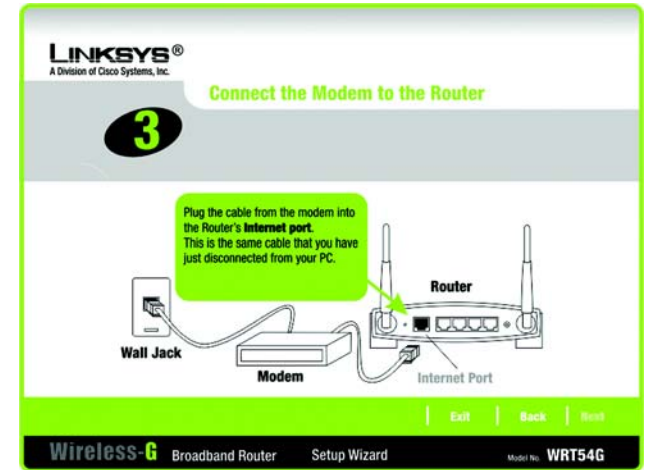


Figure 5-5: Setup Wizard's Connect the Modem to the Router Screen

- The Setup Wizard will ask you to connect a network cable to your PC. After you have done so, click the **Next** button.

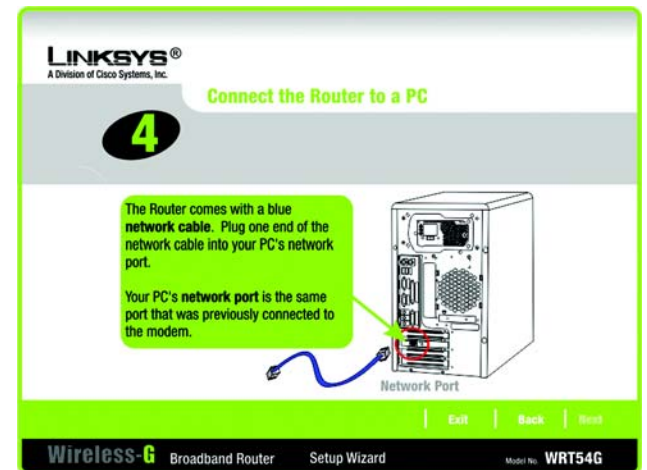


Figure 5-6: Setup Wizard's Connect a Network Cable to a PC Screen

Wireless-G Broadband Router

8. The Setup Wizard will ask you to connect the other end of the network cable to the Router.

Then you can also connect additional PCs to the Router.

After you have done so, click the **Next** button.

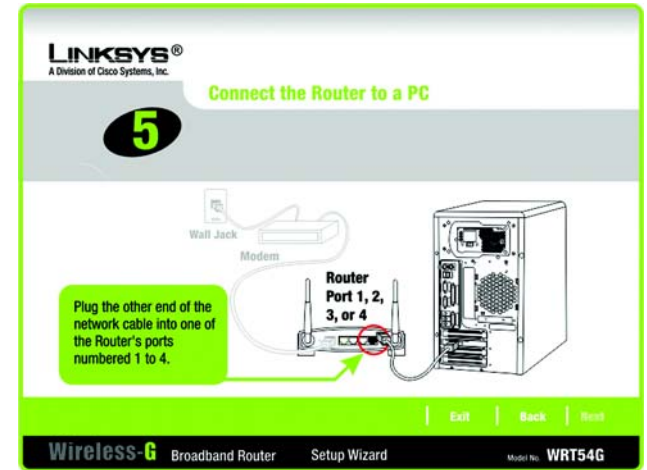


Figure 5-7: Setup Wizard's Connect the Network Cable to the Router Screen

9. The Setup Wizard will ask you to power on the Router. After you have done so, click the **Next** button.

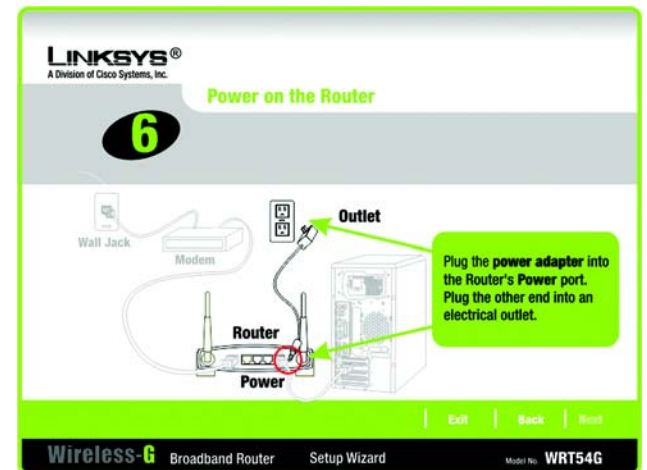


Figure 5-8: Setup Wizard's Power on the Router Screen

10. Make sure the Router's Power, Internet, and numbered LEDs (depending on the number of PCs connected) are lit on its front panel. After you have done so, click the **Next** button.

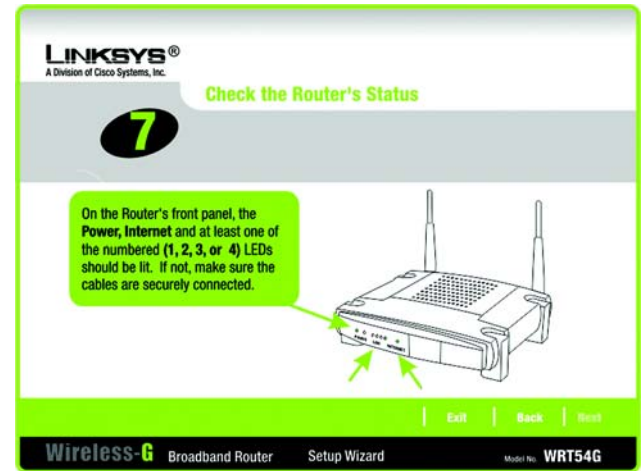


Figure 5-9: Setup Wizard's Check the Router's Status Screen

11. The Setup Wizard will automatically detect the Internet connection type you use: **Cable or DHCP** or **DSL (PPPoE)**. If the Setup Wizard cannot detect your Internet connection type, you will see the *Advanced Internet Settings* screen, and you will be asked to select your Internet connection type: **Static IP, PPTP, L2TP, or Telstra**. Proceed to the appropriate section for your Internet connection type.

Cable or DHCP

Host Name - Enter the Host Name if required by your ISP; otherwise, leave this field blank.

Domain Name - Enter the Domain Name if required by your ISP; otherwise, leave this field blank.

Click the **Next** button to continue or the **Back** button to return to the previous screen.

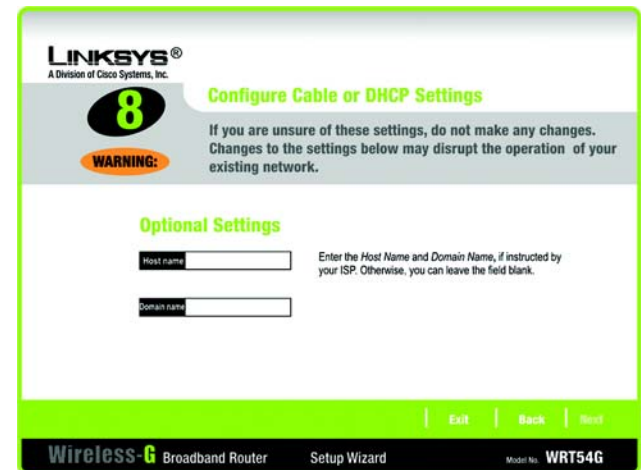


Figure 5-10: Setup Wizard's Configure Cable or DHCP Settings Screen

DSL (PPPoE)

User Name - Enter the User Name provided by your ISP.

Password - Enter the Password provided by your ISP.

Confirm - To confirm the Password, enter it again in this field.

Keep Alive - If you want the Router to periodically check your Internet connection, select **Keep Alive**. Then specify how often you want the Router to check the Internet connection. If the connection is down, the Router will automatically re-establish your connection.

Connect on Demand - If you want the Router to end the Internet connection after it has been inactive for a period of time, select **Connect on Demand** and designate the number of minutes you want that period of inactivity to last.

Click the **Next** button to continue or the **Back** button to return to the previous screen.

Static IP

Connection - If you are required to use a permanent IP address to connect to the Internet, select **Static IP** from the drop-down menu.

IP Address - Enter the IP address provided by your ISP.

Subnet Mask - Enter the Subnet Mask provided by your ISP.

Gateway - Enter the Gateway IP address provided by your ISP.

DNS 1-2 - Enter the DNS (Domain Name System) server IP address(es) provided by your ISP. You need to enter at least one DNS address.

Click the **Next** button to continue or the **Back** button to return to the previous screen.

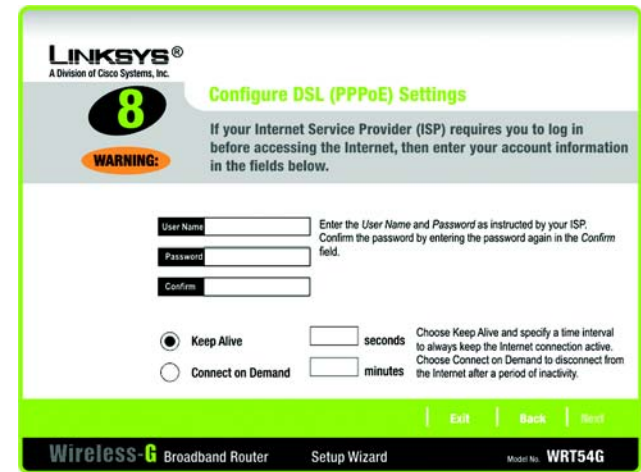


Figure 5-11: Setup Wizard's Configure DSL (PPPoE) Settings Screen

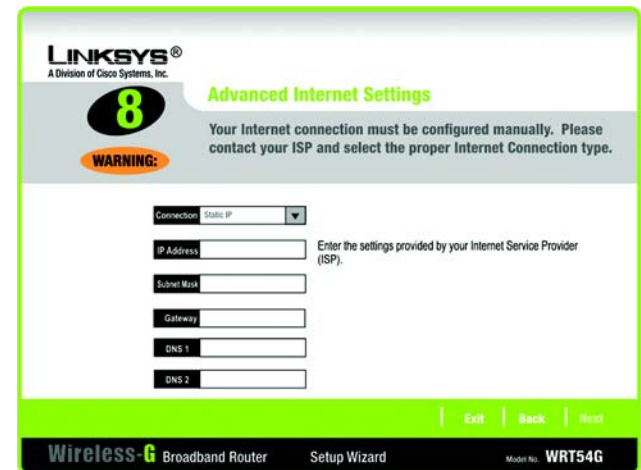


Figure 5-12: Setup Wizard's Advanced Internet Settings - Static IP Screen

PPTP

Connection - PPTP (Point-to-Point Tunneling Protocol) service is used in Europe only. If you are using a PPTP connection, select **PPTP** from the drop-down menu.

User Name - Enter the User Name provided by your ISP.

Password - Enter the Password provided by your ISP.

Confirm - To confirm the Password, enter it again in this field.

IP Address - Enter the IP address provided by your ISP.

Subnet Mask - Enter the Subnet Mask provided by your ISP.

Gateway - Enter the Gateway IP address provided by your ISP.

Click the **Next** button to continue or the **Back** button to return to the previous screen.

Keep Alive - If you want the Router to periodically check your Internet connection, select **Keep Alive**. Then specify how often you want the Router to check the Internet connection. If the connection is down, the Router will automatically re-establish your connection.

Connect on Demand - If you want the Router to end the Internet connection after it has been inactive for a period of time, select **Connect on Demand** and designate the number of minutes you want that period of inactivity to last.

Click the **Next** button to continue or the **Back** button to return to the previous screen.

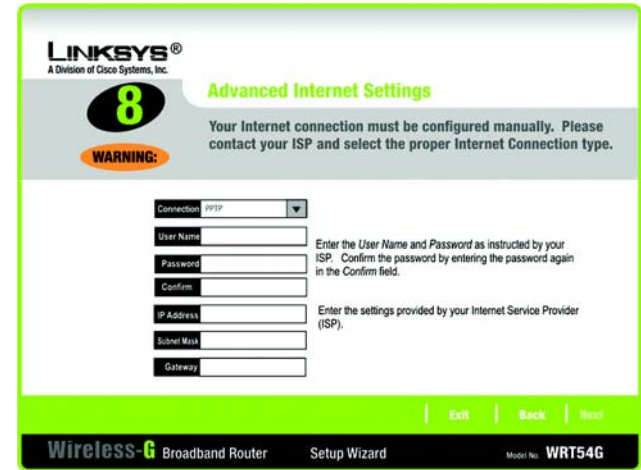


Figure 5-13: Setup Wizard's Advanced Internet Settings - PPTP Screen

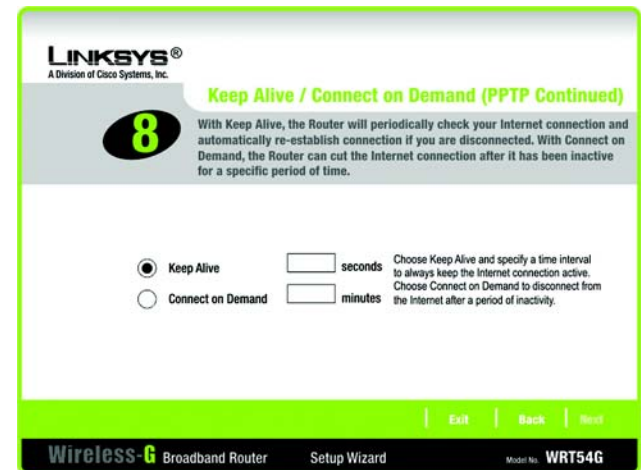


Figure 5-14: Setup Wizard's Keep Alive/Connect on Demand (PPTP Continued) Screen

L2TP

Connection - If you are using an L2TP (Layer 2 Tunneling Protocol) connection, select **L2TP** from the drop-down menu.

User Name - Enter the User Name provided by your ISP.

Password - Enter the Password provided by your ISP.

Confirm - To confirm the Password, enter it again in this field.

L2TP Server - Enter the IP address of the L2TP server you are using; this should be provided by your ISP.

Keep Alive - If you want the Router to periodically check your Internet connection, select **Keep Alive**. Then specify how often you want the Router to check the Internet connection. If the connection is down, the Router will automatically re-establish your connection.

Connect on Demand - If you want the Router to end the Internet connection after it has been inactive for a period of time, select **Connect on Demand** and designate the number of minutes you want that period of inactivity to last.

Click the **Next** button to continue or the **Back** button to return to the previous screen.

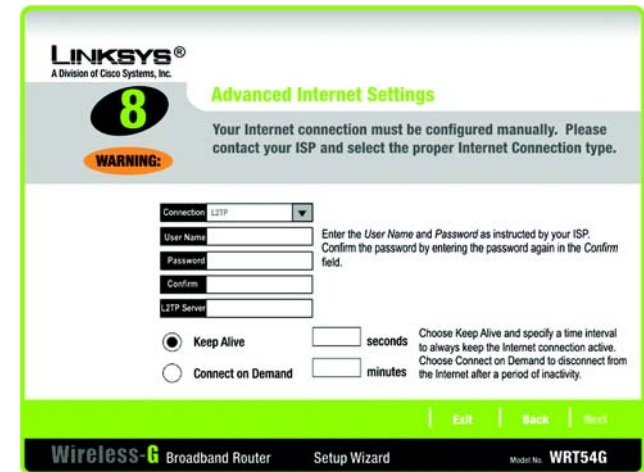


Figure 5-15: Setup Wizard's Advanced Internet Settings - L2TP Screen

Telstra

Connection - Telstra is a service used in Australia only. If you are using this service, select **Telstra** from the drop-down menu.

User Name - Enter the User Name provided by your ISP.

Password - Enter the Password provided by your ISP.

Confirm - To confirm the Password, enter it again in this field.

Heart Beat Server - Enter the IP address of the Heart Beat Server server you are using (this should be provided by your ISP).

Keep Alive - If you want the Router to periodically check your Internet connection, select **Keep Alive**. Then specify how often you want the Router to check the Internet connection. If the connection is down, the Router will automatically re-establish your connection.

Connect on Demand - If you want the Router to end the Internet connection after it has been inactive for a period of time, select **Connect on Demand** and designate the number of minutes you want that period of inactivity to last.

Click the **Next** button to continue or the **Back** button to return to the previous screen.

The screenshot shows the 'Advanced Internet Settings' screen for the Telstra connection type. At the top left, the Linksys logo is displayed with a large number '8' in a circle. A warning message states: 'Your Internet connection must be configured manually. Please contact your ISP and select the proper Internet Connection type.' Below this, there is a 'Connection' dropdown menu currently set to 'Telstra'. To the right of the dropdown are input fields for 'User Name', 'Password', and 'Confirm', with a note: 'Enter the User Name and Password as instructed by your ISP. Confirm the password by entering the password again in the Confirm field.' Below these fields is a 'Heart Beat Server' input field. Further down, there are two radio button options: 'Keep Alive' (selected) and 'Connect on Demand'. The 'Keep Alive' option has a 'seconds' field next to it, and the 'Connect on Demand' option has a 'minutes' field. To the right of these fields are instructions: 'Choose Keep Alive and specify a time interval to always keep the Internet connection active.' and 'Choose Connect on Demand to disconnect from the Internet after a period of inactivity.' At the bottom of the screen, there are 'Exit', 'Back', and 'Next' buttons. The footer of the screen displays 'Wireless-G Broadband Router', 'Setup Wizard', and 'Model No. WRT54G'.

Figure 5-16: Setup Wizard's Advanced Internet Settings - Telstra Screen

12. The Router provides a Web-based Utility you can use for configuring the Router from any networked PC.

Password - Enter a password that will control access to the Utility.

Confirm - Enter the password again in the *Confirm* field.

Click the **Next** button to continue or the **Back** button to return to the previous screen.

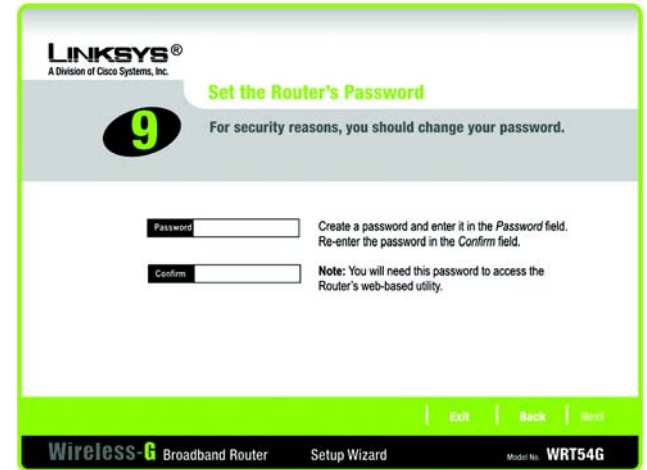


Figure 5-17: Setup Wizard's Set the Router's Password Screen

13. There are two ways to configure the Router's wireless settings, SecureEasySetup and manual configuration.

If you have other SecureEasySetup devices, such as notebook adapters or printers, then you can use the Router's SecureEasySetup feature to create your wireless network. Proceed to the section, "Using the Router's SecureEasySetup Feature."

If you do not have other SecureEasySetup devices, then proceed to the section, "Manually Configuring the Router's Wireless Settings."

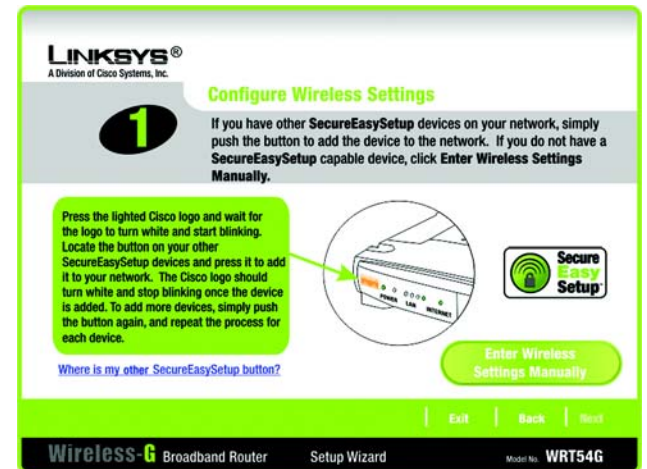


Figure 5-18: Setup Wizard's Configure Wireless Settings Screen

Using the Router's SecureEasySetup Feature

Read these instructions before you press any SecureEasySetup buttons. You should locate the SecureEasySetup buttons of your devices before using the Router's SecureEasySetup feature.



NOTE: SecureEasySetup uses WPA-Personal encryption. If your current wireless devices do not support WPA-Personal security, then you cannot use SecureEasySetup on your network. You will need to manually configure your network security using the encryption supported by your existing devices.

1. Before you push any button, locate the SecureEasySetup button for each of your other SecureEasySetup devices. If you are not sure where to find this button, click **Where is my other SecureEasySetup button?**

You will see a screen showing the SecureEasySetup logo. Click the **Next** button to continue or the **Close** button to return to the *Configure Wireless Settings* screen.

You will see a screen with instructions on how to locate the SecureEasySetup hardware button. If your device does not have a hardware button, it most likely will have a software button. Click the **Next** button for instructions to locate the software button, or click the **Close** button to return to the *Configure Wireless Settings* screen.

You will see a screen with instructions on how to locate the SecureEasySetup software button. Click the **Close** button to return to the *Configure Wireless Settings* screen.



Figure 5-19: Setup Wizard's SecureEasySetup Screen



Figure 5-20: SecureEasySetup Logo



Figure 5-21: Additional Information - Hardware Button



Figure 5-22: Additional Information - Software Button

Wireless-G Broadband Router

2. Press the Router's orange Cisco logo on its front panel. When the logo turns white and begins to flash, press the SecureEasySetup button on another device. The Router's Cisco logo will stop flashing when the device has been added to the network. Then repeat this procedure for each additional SecureEasySetup device.

When you have finished configuring the devices in your wireless network, click the **Next** button to continue.



NOTE: You can only add one SecureEasySetup device at a time.

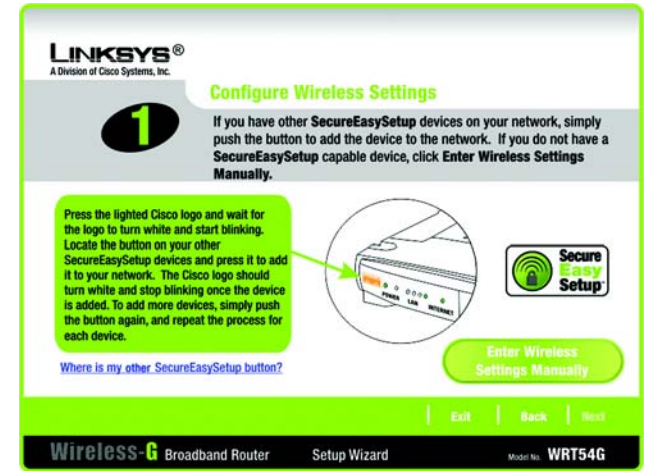


Figure 5-23: Setup Wizard's Configure Wireless Settings Screen

3. The Setup Wizard will ask you to review your settings before it saves them. Write down these settings if you need to manually configure any non-SecureEasySetup devices.

Click the **Yes** button if you are satisfied with your settings, or click the **No** button if you do not want to save your new settings.

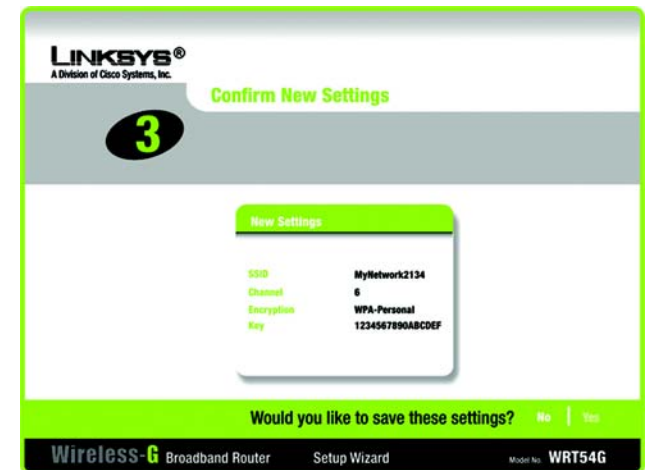


Figure 5-24: Setup Wizard's Confirm New Settings Screen

Wireless-G Broadband Router

4. After the settings have been saved, the *Safe Surfing* screen will appear. Click the **Norton Internet Security Suite** button to install the special edition of Norton Internet Security on your computer, or click the **Finish** button to complete the Setup Wizard.

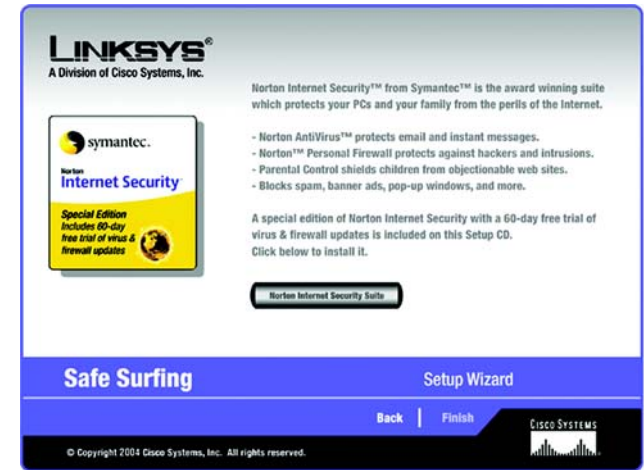


Figure 5-25: Setup Wizard's Safe Surfing Screen

5. The *Congratulations* screen will appear. Click the **Online Registration** button to register the Router, or click the **Exit** button to exit the Setup Wizard.

Congratulations! The installation of the Wireless-G Broadband Router is complete.

If you want to make advanced configuration changes, proceed to “Chapter 6: Configuring the Wireless-G Broadband Router.”

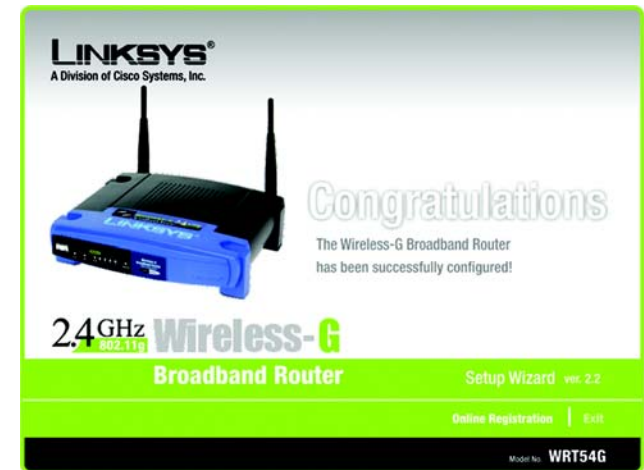


Figure 5-26: Setup Wizard's Congratulations Screen

Manually Configuring the Router's Wireless Settings

1. If you do not have other SecureEasySetup devices, then click the **Enter Wireless Settings Manually** button.

2. The Setup Wizard will ask you to enter the settings for your wireless network.

In the *SSID* field, enter the name of your wireless network. The SSID must be identical for all devices in the network. The default setting is **linksys** (all lowercase).



NOTE: An SSID is the network name shared by all devices in a wireless network. Your network's SSID should be unique to your network and identical for all devices within the network.

Select the operating channel for your wireless network. All of your wireless devices will use this channel to communicate.

From the *Network Mode* drop-down menu, select the wireless standards running on your network. If you have both 802.11g and 802.11b devices in your network, keep the default setting, **Mixed Mode**. If you have only 802.11g devices, select **G-Only**. If you have only 802.11b devices, select **B-Only**. If you want to disable your wireless network, select **Disable**.

Enter a name for the Router in the *Device Name* field.

Click the **Next** button to continue or the **Back** button to return to the previous screen.

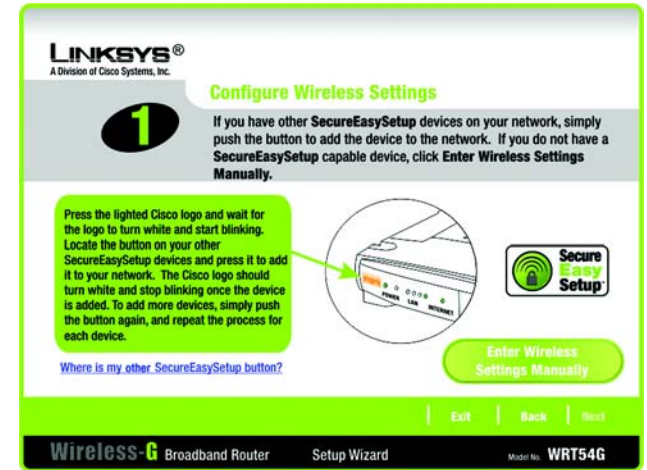


Figure 5-27: Setup Wizard's Configure Wireless Settings Screen

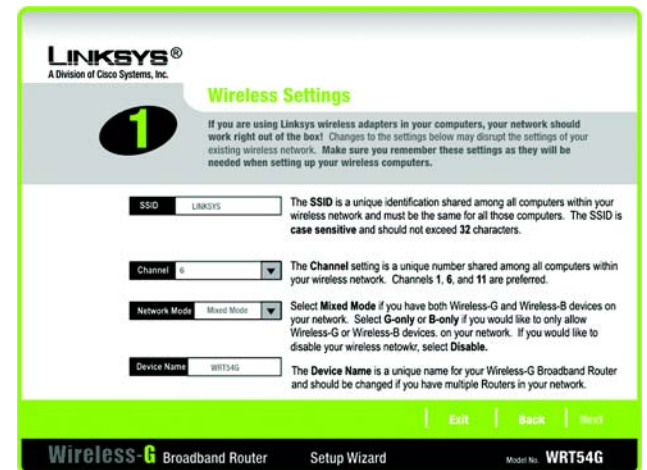


Figure 5-28: Setup Wizard's Wireless Settings Screen

Wireless-G Broadband Router

3. Select the method of security you want to use: **WPA-PSK** (also called WPA-Personal), **WEP (64-Bit)**, or **WEP (128-Bit)**. WPA stands for Wi-Fi Protected Access, and WEP stands for Wired Equivalent Privacy. WPA is a stronger security method than WEP. Proceed to the appropriate section for your security method.

If you want to use WPA-RADIUS (also called WPA-Enterprise), then you should select **Disabled** and use the Router's Web-based Utility to configure your wireless security settings. Click the **Next** button and proceed to step 4.

If you do not want to use any wireless security method, select **Disabled** and then click the **Next** button. Proceed to step 4.

WPA-PSK

WPA-PSK offers two encryption methods, TKIP and AES, with dynamic encryption keys. Select **TKIP** or **AES** for encryption. Then enter a Passphrase that is 8-32 characters in length.

Encryption - Select the type of algorithm you want to use, **TKIP** or **AES**, from the *Encryption* drop-down menu.

Passphrase - Enter a Passphrase, also called a pre-shared key, of 8-32 characters in the *Passphrase* field. The longer and more complex your Passphrase is, the more secure your network will be.

Click the **Next** button to continue or the **Back** button to return to the previous screen.



Figure 5-29: Setup Wizard's Wireless Security - WPA-PSK Screen

wpa (*wi-fi protected access: a wireless security protocol using TKIP (Temporal Key Integrity Protocol) encryption, which can be used in conjunction with a RADIUS server.*

wep (*wired equivalent privacy: a method of encrypting network data transmitted on a wireless network for greater security.*

radius (*remote authentication dial-in user service: a protocol that uses an authentication server to control network access.*

encryption: *encoding data transmitted in a network.*

WEP (64-Bit)

Enter a passphrase or WEP key.

Passphrase - Enter a passphrase in the *Passphrase* field, so a WEP key is automatically generated. The passphrase is case-sensitive and should not be longer than 16 alphanumeric characters. It must match the passphrase of your other wireless network devices and is compatible with Linksys wireless products only. (If you have any non-Linksys wireless products, enter the WEP key manually on those products.)

WEP Key - The WEP key you enter must match the WEP key of your wireless network. For 64-bit encryption, enter exactly 10 hexadecimal characters. Valid hexadecimal characters are "0" to "9" and "A" to "F".

Click the **Next** button to continue or the **Back** button to return to the previous screen.

WEP (128-Bit)

Enter a passphrase or WEP key.

Passphrase - Enter a passphrase in the *Passphrase* field, so a WEP key is automatically generated. The passphrase is case-sensitive and should not be longer than 16 alphanumeric characters. It must match the passphrase of your other wireless network devices and is compatible with Linksys wireless products only. (If you have any non-Linksys wireless products, enter the WEP key manually on those products.)

WEP Key - The WEP key you enter must match the WEP key of your wireless network. For 128-bit encryption, enter exactly 26 hexadecimal characters. Valid hexadecimal characters are "0" to "9" and "A" to "F".

Click the **Next** button to continue or the **Back** button to return to the previous screen.

4. The Setup Wizard will ask you to review your settings before it saves them. Click the **Yes** button if you are satisfied with your settings, or click the **No** button if you do not want to save your new settings.



Figure 5-30: Setup Wizard's Wireless Security - WEP (64-Bit) Screen

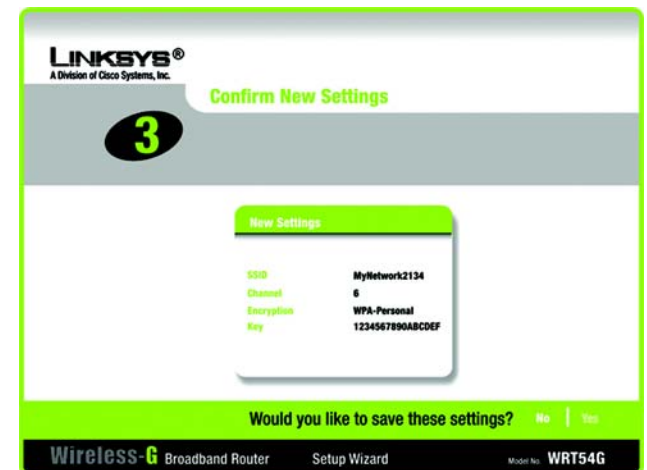


Figure 5-31: Setup Wizard's Confirm New Settings Screen

Wireless-G Broadband Router

5. After the settings have been saved, the *Safe Surfing* screen will appear. Click the **Norton Internet Security Suite** button to install the special edition of Norton Internet Security on your computer, or click the **Finish** button to complete the Setup Wizard.

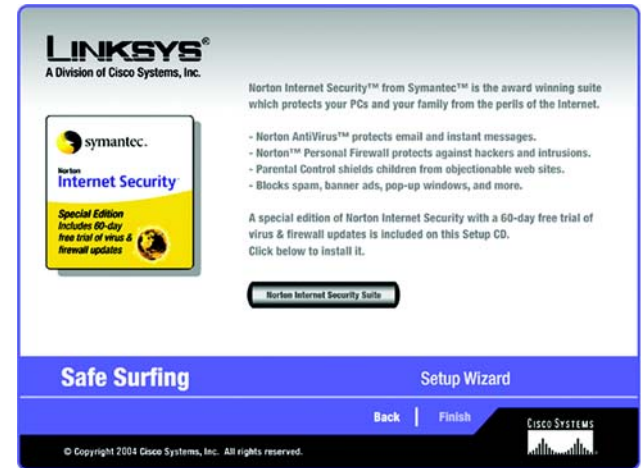


Figure 5-32: Setup Wizard's Norton Screen

6. The *Congratulations* screen will appear. Click the **Online Registration** button to register the Router, or click the **Exit** button to exit the Setup Wizard.

Congratulations! The installation of the Wireless-G Broadband Router is complete.

If you want to make advanced configuration changes, proceed to “Chapter 6: Configuring the Wireless-G Broadband Router.”



Figure 5-33: Setup Wizard's Congratulations Screen

Using SecureEasySetup to Configure Your Notebook

This section explains how to use SecureEasySetup if you have a computer displaying the SecureEasySetup logo.



NOTE: SecureEasySetup uses WPA-Personal encryption. If your current wireless devices do not support WPA-Personal security, then you cannot use SecureEasySetup on your network. You will need to manually configure your network security using the encryption supported by your existing devices.

1. After you have clicked **Wireless Setup** on the *Welcome* screen, the first screen that appears will describe the two steps you will take to configure your notebook. Click the **Next** button to continue.

To exit the Wireless Setup Wizard, click the **Exit** button. If you need more information, click the **Help** button.



Figure 5-34: Setup Wizard's Welcome - Start Wizard Screen



Figure 5-35: SecureEasySetup Welcome Screen

Wireless-G Broadband Router

2. The next screen will tell you to press the lighted Cisco logo on the Router. After you have pressed the logo, click the **Next** button to continue.

To exit the Wireless Setup Wizard, click the **Exit** button. If you need more information, click the **Help** button.

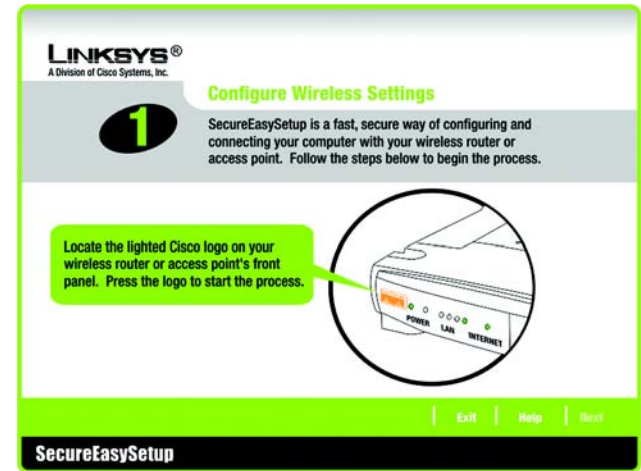


Figure 5-36: Configure Wireless Settings #1 Screen

3. Click the on-screen **START** button to continue.

To exit the Wireless Setup Wizard, click the **Exit** button. If you need more information, click the **Help** button. To return to the previous screen, click the **Back** button.



Figure 5-37: Configure Wireless Settings #2 Screen

Wireless-G Broadband Router

- The *Your Wireless Settings* screen will appear when the wireless settings have been configured. To save your configuration settings to a text file on your computer, click the **Save** button. To print your configuration settings, click the **Print** button. (You may need these settings so you can manually configure any non-SecureEasySetup devices you may have.)

To exit the Wireless Setup Wizard, click the **Exit** button. If you need more information, click the **Help** button. To return to the previous screen, click the **Back** button.

Congratulations! The installation of the Wireless-G Broadband Router is complete.

If you want to make advanced configuration changes, proceed to “Chapter 6: Configuring the Wireless-G Broadband Router.”



Figure 5-38: Your Wireless Settings Screen

Chapter 6: Configuring the Wireless-G Broadband Router

Overview

Linksys recommends using the Setup CD-ROM for first-time installation of the Router. If you do not wish to run the Setup Wizard on the Setup CD-ROM, then you can use the Web-based Utility to configure the Router. For advanced users, you may configure the Router's advanced settings through the Web-based Utility.

This chapter will describe each web page in the Utility and each page's key functions. The utility can be accessed via your web browser through use of a computer connected to the Router. For a basic network setup, most users will use these two screens of the Utility:

- **Basic Setup.** On the *Basic Setup* screen, enter the settings provided by your ISP.
- **Management.** Click the **Administration** tab and then the **Management** tab. The Router's default password is **admin**. To secure the Router, change the Password from its default.

There are seven main tabs: Setup, Wireless, Security, Access Restrictions, Applications & Gaming, Administration, and Status. Additional tabs will be available after you click one of the main tabs.

To access the Web-based Utility, launch Internet Explorer or Netscape Navigator, and enter the Router's default IP address, **192.168.1.1**, in the *Address* field. Then press **Enter**.

A password request page, shown in Figure 6-1 will appear. (Non-Windows XP users will see a similar screen.) Leave the *User Name* field blank. The first time you open the Web-based Utility, use the default password **admin**. (You can set a new password from the Administration tab's *Management* screen.) Then click the **OK** button.



NOTE: For first-time installation, Linksys recommends using the Setup Wizard on the Setup CD-ROM. If you want to configure advanced settings, use this chapter to learn about the Web-based Utility.



HAVE YOU: Enabled TCP/IP on your PCs? PCs communicate over the network with this protocol. Refer to "Appendix D: Windows Help" for more information on TCP/IP.

The screenshot shows a web browser window titled "Connect to 192.168.1.1". The page content includes a key icon and the text "WRT54G". Below this, there is a "User name:" label followed by a text input field containing a small user icon. To the right of the input field is a dropdown arrow. Below the "User name:" field is a "Password:" label followed by a password input field. Underneath the password field is a checkbox labeled "Remember my password". At the bottom of the form are two buttons: "OK" and "Cancel".

Figure 6-1: Password Screen

The Setup Tab - Basic Setup

The first screen that appears displays the Setup tab. This allows you to change the Router's general settings. Change these settings as described here and click the **Save Settings** button to apply your changes or **Cancel Changes** to cancel your changes.

Internet Setup

The Internet Setup section configures the Router to your Internet connection. Most of this information can be obtained through your ISP.

Internet Connection Type

Choose the type of Internet connection your ISP provides from the drop-down menu.

- **DHCP.** By default, the Router's Internet Connection Type is set to **Automatic Configuration - DHCP**, which should be kept only if your ISP supports DHCP or you are connecting through a dynamic IP address.
- **Static IP.** If you are required to use a permanent IP address to connect to the Internet, select **Static IP**.

Internet IP Address. This is the Router's IP address, when seen from the Internet. Your ISP will provide you with the IP Address you need to specify here.

Subnet Mask. This is the Router's Subnet Mask, as seen by users on the Internet (including your ISP). Your ISP will provide you with the Subnet Mask.

Gateway. Your ISP will provide you with the Gateway Address, which is the ISP server's IP address.

DNS. Your ISP will provide you with at least one DNS (Domain Name System) Server IP Address.

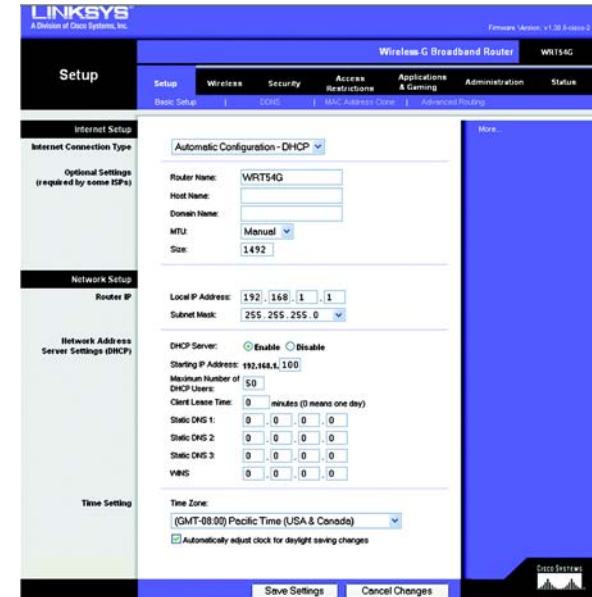


Figure 6-2: Setup Tab - Basic Setup



Figure 6-3: DHCP Connection Type

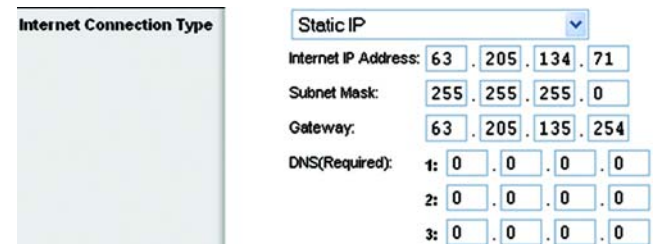


Figure 6-4: Static IP Connection Type

Static IP address: a fixed address assigned to a computer or device connected to a network.

- **PPPoE.** Some DSL-based ISPs use PPPoE (Point-to-Point Protocol over Ethernet) to establish Internet connections. If you are connected to the Internet through a DSL line, check with your ISP to see if they use PPPoE. If they do, you will have to enable **PPPoE**.

User Name and Password. Enter the User Name and Password provided by your ISP.

Connect on Demand: Max Idle Time. You can configure the Router to cut the Internet connection after it has been inactive for a specified period of time (Max Idle Time). If your Internet connection has been terminated due to inactivity, Connect on Demand enables the Router to automatically re-establish your connection as soon as you attempt to access the Internet again. If you wish to activate Connect on Demand, click the radio button. In the *Max Idle Time* field, enter the number of minutes you want to have elapsed before your Internet connection terminates.

Keep Alive Option: Redial Period. If you select this option, the Router will periodically check your Internet connection. If you are disconnected, then the Router will automatically re-establish your connection. To use this option, click the radio button next to *Keep Alive*. In the *Redial Period* field, you specify how often you want the Router to check the Internet connection. The default Redial Period is 30 seconds.

- **PPTP.** Point-to-Point Tunneling Protocol (**PPTP**) is a service that applies to connections in Europe only.

Specify Internet IP Address. This is the Router's IP address, as seen from the Internet. Your ISP will provide you with the IP Address you need to specify here.

Subnet Mask. This is the Router's Subnet Mask, as seen by users on the Internet (including your ISP). Your ISP will provide you with the Subnet Mask.

Gateway. Your ISP will provide you with the Gateway Address.

User Name and Password. Enter the User Name and Password provided by your ISP.

Connect on Demand: Max Idle Time. You can configure the Router to cut the Internet connection after it has been inactive for a specified period of time (Max Idle Time). If your Internet connection has been terminated due to inactivity, Connect on Demand enables the Router to automatically re-establish your connection as soon as you attempt to access the Internet again. If you wish to activate Connect on Demand, click the radio button. In the *Max Idle Time* field, enter the number of minutes you want to have elapsed before your Internet connection terminates.

Keep Alive Option: Redial Period. If you select this option, the Router will periodically check your Internet connection. If you are disconnected, then the Router will automatically re-establish your connection. To use this option, click the radio button next to *Keep Alive*. In the *Redial Period* field, you specify how often you want the Router to check the Internet connection. The default Redial Period is 30 seconds.



Figure 6-5: PPPoE Connection Type

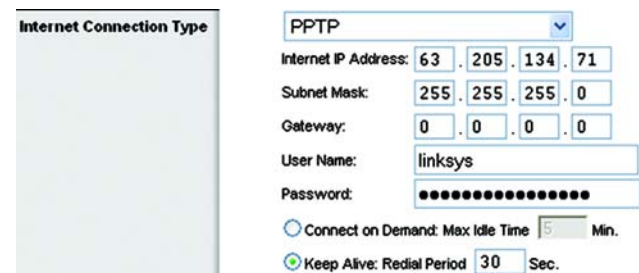


Figure 6-6: PPTP Connection Type

Wireless-G Broadband Router

- **HeartBeat Signal.** HeartBeat Signal (HBS) is a service that applies to connections in Australia only. If your ISP is Telstra, then select **HeartBeat Signal**.

User Name and Password. Enter the User Name and Password provided by your ISP.

Heart Beat Server. This is the IP address that the Router has, when seen from the Internet. Your ISP will provide you with the IP Address you need to specify here.

Connect on Demand: Max Idle Time. You can configure the Router to cut the Internet connection after it has been inactive for a specified period of time (Max Idle Time). If your Internet connection has been terminated due to inactivity, Connect on Demand enables the Router to automatically re-establish your connection as soon as you attempt to access the Internet again. If you wish to activate Connect on Demand, click the radio button. In the *Max Idle Time* field, enter the number of minutes you want to have elapsed before your Internet connection terminates.

Keep Alive Option: Redial Period. If you select this option, the Router will periodically check your Internet connection. If you are disconnected, then the Router will automatically re-establish your connection. To use this option, click the radio button next to *Keep Alive*. In the *Redial Period* field, you specify how often you want the Router to check the Internet connection. The default Redial Period is 30 seconds.

Optional Settings

Some of these settings may be required by your ISP. Verify with your ISP before making any changes.

Router Name. In this field, you can type a name of up to 39 characters to represent the Router.

Host Name/Domain Name. These fields allow you to supply a host and domain name for the Router. Some ISPs, usually cable ISPs, require these names as identification. You may have to check with your ISP to see if your broadband Internet service has been configured with a host and domain name. In most cases, leaving these fields blank will work.

MTU. MTU is the Maximum Transmission Unit. It specifies the largest packet size permitted for Internet transmission. The default setting, **Manual**, allows you to enter the largest packet size that will be transmitted. The recommended size, entered in the *Size* field, is 1492. You should leave this value in the 1200 to 1500 range. To have the Router select the best MTU for your Internet connection, select **Auto**.

Network Setup

The Network Setup section changes the settings on the network connected to the Router's Ethernet ports. Wireless Setup is performed through the Wireless tab.

Internet Connection Type: HeartBeat Signal

User Name: []

Password: []

Heart Beat Server: [0].[0].[0].[0]

Connect on Demand: Max Idle Time [] Min.

Keep Alive: Redial Period [30] Sec.

Figure 6-7: HeartBeat Signal Connection Type

Optional Settings (required by some ISPs)

Router Name: WRT54GL

Host Name: []

Domain Name: []

MTU: Manual

Size: 1492

Figure 6-8: Optional Settings

Router IP

This presents both the Router's IP Address and Subnet Mask as seen by your network.

Network Address Server Settings (DHCP)

The settings allow you to configure the Router's Dynamic Host Configuration Protocol (DHCP) server function. The Router can be used as a DHCP server for your network. A DHCP server automatically assigns an IP address to each computer on your network. If you choose to enable the Router's DHCP server option, you must configure all of your network PCs to connect to a DHCP server (the Router), and make sure there is no other DHCP server on your network.

DHCP Server. DHCP is enabled by factory default. If you already have a DHCP server on your network, or you don't want a DHCP server, then click the **Disable** radio button (no other DHCP features will be available).

Starting IP Address. Enter a value for the DHCP server to start with when issuing IP addresses. Because the Router's default IP address is 192.168.1.1, the Starting IP Address must be 192.168.1.2 or greater, but smaller than 192.168.1.253. The default Starting IP Address is **192.168.1.100**.

Maximum Number of DHCP Users. Enter the maximum number of PCs that you want the DHCP server to assign IP addresses to. This number cannot be greater than 253. The default is 50.

Client Lease Time. The Client Lease Time is the amount of time a network user will be allowed connection to the Router with their current dynamic IP address. Enter the amount of time, in minutes, that the user will be "leased" this dynamic IP address. After the time is up, the user will be automatically assigned a new dynamic IP address. The default is 0 minutes, which means one day.

Static DNS (1-3). The Domain Name System (DNS) is how the Internet translates domain or website names into Internet addresses or URLs. Your ISP will provide you with at least one DNS Server IP Address. If you wish to use another, type that IP Address in one of these fields. You can type up to three DNS Server IP Addresses here. The Router will use these for quicker access to functioning DNS servers.

WINS. The Windows Internet Naming Service (WINS) manages each PC's interaction with the Internet. If you use a WINS server, enter that server's IP Address here. Otherwise, leave this blank.

Time Setting

Change the time zone in which your network functions from this pull-down menu. (You can even automatically adjust for daylight savings time.)

Router IP

Local IP Address: 192 . 168 . 1 . 1

Subnet Mask: 255 . 255 . 255 . 0

Figure 6-9: Router IP

Network Address Server Settings (DHCP)

DHCP Server: Enable Disable

Starting IP Address: 192.168.1.100

Maximum Number of DHCP Users: 50

Client Lease Time: 0 minutes (0 means one day)

Static DNS 1: 0 . 0 . 0 . 0

Static DNS 2: 0 . 0 . 0 . 0

Static DNS 3: 0 . 0 . 0 . 0

WINS: 0 . 0 . 0 . 0

Figure 6-10: Network Address Server Settings

Time Setting

Time Zone: (GMT-08:00) Pacific Time (USA & Canada)

Automatically adjust clock for daylight saving changes

Figure 6-11: Time Setting

The Setup Tab - DDNS

The Router offers a Dynamic Domain Name System (DDNS) feature. DDNS lets you assign a fixed host and domain name to a dynamic Internet IP address. It is useful when you are hosting your own website, FTP server, or other server behind the Router. Before you can use this feature, you need to sign up for DDNS service with a DDNS service provider, www.dyndns.org or www.TZO.com.

DDNS Service. From this pull-down menu, enter the DDNS service with which you have membership.

User Name. Enter the User Name for your DDNS account

Password. Enter the Password for your DDNS account.

Host Name. This is the DDNS URL assigned by the DDNS service.

Internet IP Address. This is the Router's current IP Address as seen on the Internet.

Status. This displays the status of the DDNS connection.

Change these settings as described here and click the **Save Settings** button to apply your changes or **Cancel Changes** to cancel your changes.



Figure 6-12: Setup Tab - DDNS

The Setup Tab - MAC Address Clone

A MAC address is a 12-digit code assigned to a unique piece of hardware for identification. Some ISPs will require you to register a MAC address in order to access the Internet. If you do not wish to re-register the MAC address with your ISP, you may assign the MAC address you have currently registered with your ISP to the Router with the MAC Address Clone feature.

Enable/Disable. To have the MAC Address cloned, click the radio button beside *Enable*.

User Defined Entry. Enter the MAC Address registered with your ISP here.

Clone Your PC's MAC Address. Clicking this button will clone the MAC address.

Change these settings as described here and click the **Save Settings** button to apply your changes or **Cancel Changes** to cancel your changes.



Figure 6-13: Setup Tab - MAC Address Clone

The Setup Tab - Advanced Routing

This tab is used to set up the Router's advanced functions. Operating Mode allows you to select the type(s) of advanced functions you use. Dynamic Routing will automatically adjust how packets travel on your network. Static Routing sets up a fixed route to another network destination.

Operating Mode. Select the mode in which this Router will function. If this Router is hosting your network's connection to the Internet, select **Gateway**. If another Router exists on your network, select **Router**. When Router is chosen, **Dynamic Routing** will be enabled.

Dynamic Routing. This feature enables the Router to automatically adjust to physical changes in the network's layout and exchange routing tables with the other router(s). The Router determines the network packets' route based on the fewest number of hops between the source and the destination. This feature is **Disabled** by default. From the drop-down menu, you can also select **LAN & Wireless**, which performs dynamic routing over your Ethernet and wireless networks. You can also select **WAN**, which performs dynamic routing with data coming from the Internet. Finally, selecting **Both** enables dynamic routing for both networks, as well as data from the Internet.

Static Routing. To set up a static route between the Router and another network, select a number from the *Static Routing* drop-down list. (A static route is a pre-determined pathway that network information must travel to reach a specific host or network.) Enter the information described below to set up a new static route. (Click the **Delete This Entry** button to delete a static route.)

Enter Route Name. Enter a name for the Route here, using a maximum of 25 alphanumeric characters.

Destination LAN IP. The Destination LAN IP is the address of the remote network or host to which you want to assign a static route.

Subnet Mask. The Subnet Mask determines which portion of a Destination LAN IP address is the network portion, and which portion is the host portion.

Default Gateway. This is the IP address of the gateway device that allows for contact between the Router and the remote network or host.

Interface. This interface tells you whether the Destination IP Address is on the **LAN & Wireless** (Ethernet and wireless networks), the **WAN** (Internet), or **Loopback** (a dummy network in which one PC acts like a network—necessary for certain software programs).

Click the **Show Routing Table** button to view the Static Routes you've already set up.

Change these settings as described here and click the **Save Settings** button to apply your changes or **Cancel Changes** to cancel your changes.

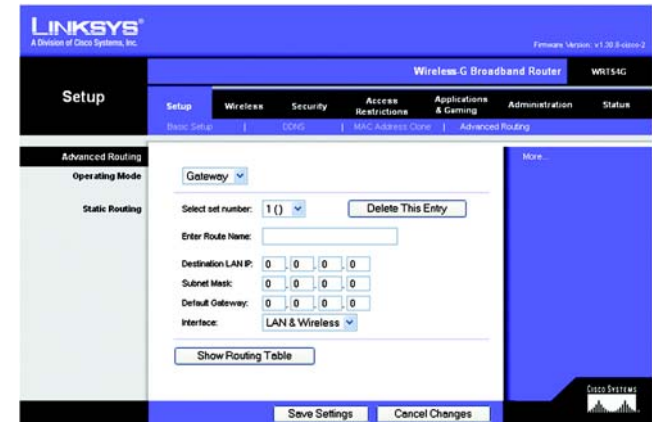


Figure 6-14: Setup Tab - Advanced Routing (Gateway)

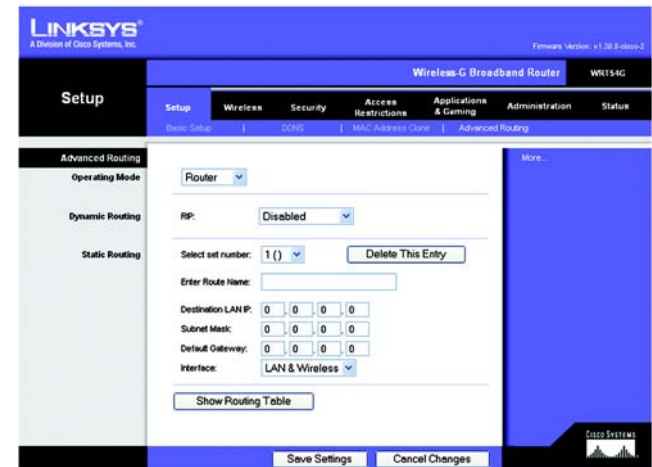


Figure 6-15: Setup Tab - Advanced Routing (Router)

The Wireless Tab - Basic Wireless Settings

The basic settings for wireless networking are set on this screen.

Wireless Network Mode. From this drop-down menu, you can select the wireless standards running on your network. If you have both 802.11g and 802.11b devices in your network, keep the default setting, **Mixed**. If you have only 802.11g devices, select **G-Only**. If you have only 802.11b devices, select **B-Only**. If you do not have any 802.11g and 802.11b devices in your network, select **Disable**.

Wireless Network Name (SSID). The SSID is the network name shared among all devices in a wireless network. The SSID must be identical for all devices in the wireless network. It is case-sensitive and must not exceed 32 characters (use any of the characters on the keyboard). Make sure this setting is the same for all devices in your wireless network. For added security, you should change the default SSID (**linksys**) to a unique name.

Wireless Channel. Select the appropriate channel from the list provided to correspond with your network settings. All devices in your wireless network must be broadcast on the same channel in order to function correctly.

Wireless SSID Broadcast. When wireless clients survey the local area for wireless networks to associate with, they will detect the SSID broadcast by the Router. To broadcast the Router's SSID, keep the default setting, **Enable**. If you do not want to broadcast the Router's SSID, then select **Disable**.

Change these settings as described here and click the **Save Settings** button to apply your changes or **Cancel Changes** to cancel your changes.



Figure 6-16: Wireless Tab - Basic Wireless Settings

The Wireless Tab - Wireless Security

The Wireless Security settings configure the security of your wireless network. There are four wireless security mode options supported by the Router: WPA Personal, WPA Enterprise, WPA2 Personal, WPA2 Enterprise, RADIUS, and WEP. (WEP stands for Wired Equivalent Privacy, WPA stands for Wi-Fi Protected Access, which is a security standard stronger than WEP encryption. WPA2 is stronger than WPA. WPA Enterprise is WPA used in coordination with a RADIUS server. RADIUS stands for Remote Authentication Dial-In User Service.) These are briefly discussed here. For detailed instructions on configuring wireless security for the Router, turn to “Appendix B: Wireless Security.”

WPA Personal. WPA gives you two encryption methods, TKIP and AES, with dynamic encryption keys. Select the type of algorithm, **TKIP** or **AES**. Enter a WPA Shared Key of 8-63 characters. Then enter a Group Key Renewal period, which instructs the Router how often it should change the encryption keys.

WPA Enterprise. This option features WPA used in coordination with a RADIUS server. (This should only be used when a RADIUS server is connected to the Router.) First, select the type of WPA algorithm you want to use, **TKIP** or **AES**. Enter the RADIUS server’s IP Address and port number, along with a key shared between the Router and the server. Last, enter a Key Renewal Timeout, which instructs the Router how often it should change the encryption keys.



IMPORTANT: If you are using WPA, always remember that each device in your wireless network **MUST** use the same WPA method and shared key, or else the network will not function properly.

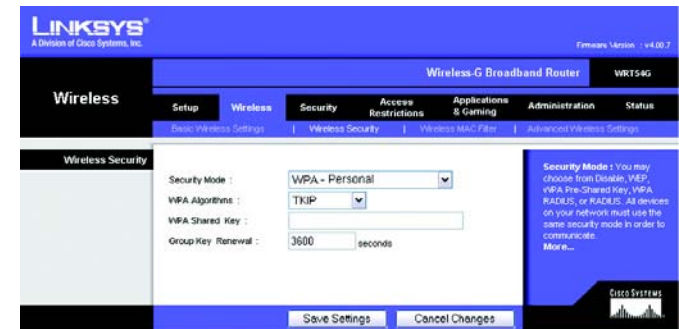


Figure 6-17: Wireless Tab - Wireless Security (WPA Personal)



Figure 6-18: Wireless Tab - Wireless Security (WPA Enterprise)

Wireless-G Broadband Router

WPA2 Personal. WPA2 gives you two encryption methods, TKIP and AES, with dynamic encryption keys. Select the type of algorithm, **AES**, or **TKIP + AES**. Enter a WPA Shared Key of 8-63 characters. Then enter a Group Key Renewal period, which instructs the Router how often it should change the encryption keys.

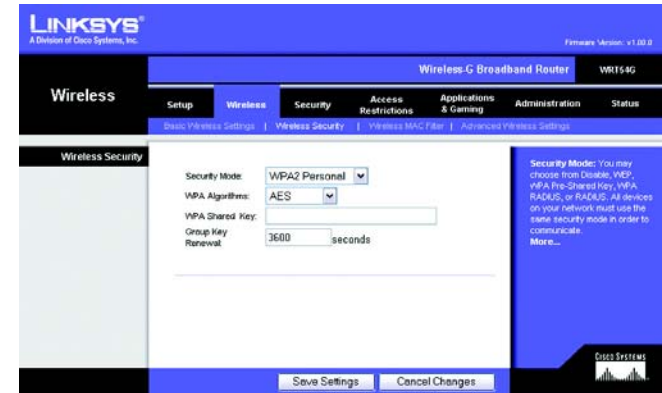


Figure 6-19: Wireless Tab - Wireless Security (WPA2 Personal)

WPA2 Enterprise. This option features WPA2 used in coordination with a RADIUS server. (This should only be used when a RADIUS server is connected to the Router.) First, select the type of WPA algorithm you want to use, **AES**, or **TKIP + AES**. Enter the RADIUS server's IP Address and port number, along with a key shared between the Router and the server. Last, enter a Key Renewal Timeout, which instructs the Router how often it should change the encryption keys.

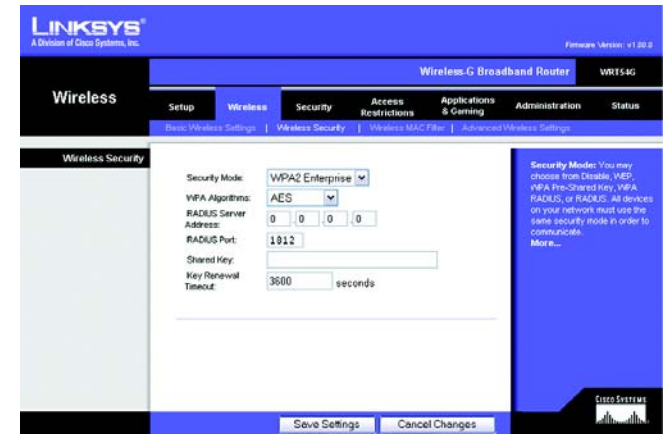


Figure 6-20: Wireless Tab - Wireless Security (WPA2 Enterprise)

RADIUS. This option features WEP used in coordination with a RADIUS server. (This should only be used when a RADIUS server is connected to the Router.) First, enter the RADIUS server's IP Address and port number, along with a key shared between the Router and the server. Then, select a Default Transmit Key (choose which Key to use), and a level of WEP encryption, **64 bits 10 hex digits** or **128 bits 26 hex digits**. Last, either generate a WEP key using the Passphrase or enter the WEP key manually.



IMPORTANT: If you are using WEP encryption, always remember that each device in your wireless network **MUST** use the same WEP encryption method and encryption key, or else your wireless network will not function properly.



Figure 6-21: Wireless Tab - Wireless Security (RADIUS)

WEP. WEP is a basic encryption method, which is not as secure as WPA. To use WEP, select a Default Transmit Key (choose which Key to use), and a level of WEP encryption, **64 bits 10 hex digits** or **128 bits 26 hex digits**. Then either generate a WEP key using the Passphrase or enter the WEP key manually.

Change these settings as described here and click the **Save Settings** button to apply your changes or **Cancel Changes** to cancel your changes. For detailed instructions on configuring wireless security for the Router, turn to “Appendix B: Wireless Security.”



Figure 6-22: Wireless Tab - Wireless Security (WEP)

The Wireless Tab - Wireless MAC Filter

Wireless access can be filtered by using the MAC addresses of the wireless devices transmitting within your network's radius.

Wireless MAC Filter. To filter wireless users by MAC Address, either permitting or blocking access, click **Enable**. If you do not wish to filter users by MAC Address, select **Disable**.

Prevent. Clicking this button will block wireless access by MAC Address.

Permit Only. Clicking this button will allow wireless access by MAC Address.

Edit MAC Address Filter List. Clicking this button will open the MAC Address Filter List. On this screen, you can list users, by MAC Address, to whom you wish to provide or block access. For easy reference, click the **Wireless Client MAC List** button to display a list of network users by MAC Address.

Change these settings as described here and click the **Save Settings** button to apply your changes or **Cancel Changes** to cancel your changes.



Figure 6-23: Wireless Tab - Wireless MAC Filter

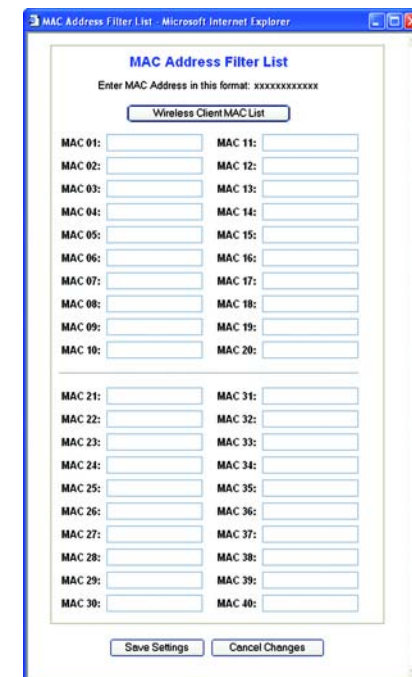


Figure 6-24: MAC Address Filter List

The Wireless Tab - Advanced Wireless Settings

This tab is used to set up the Router's advanced wireless functions. These settings should only be adjusted by an expert administrator as incorrect settings can reduce wireless performance.

Authentication Type. The default is set to **Auto**, which allows either Open System or Shared Key authentication to be used. With **Open System** authentication, the sender and the recipient do NOT use a WEP key for authentication. With **Shared Key** authentication, the sender and recipient use a WEP key for authentication.

Basic Rate. The Basic Rate setting is not actually one rate of transmission but a series of rates at which the Router can transmit. The Router will advertise its Basic Rate to the other wireless devices in your network, so they know which rates will be used. The Router will also advertise that it will automatically select the best rate for transmission. The default setting is **Default**, when the Router can transmit at all standard wireless rates (1-2Mbps, 5.5Mbps, 11Mbps, 18Mbps, and 24Mbps). Other options are **1-2Mbps**, for use with older wireless technology, and **All**, when the Router can transmit at all wireless rates. The Basic Rate is not the actual rate of data transmission. If you want to specify the Router's rate of data transmission, configure the Transmission Rate setting.

Transmission Rate. The rate of data transmission should be set depending on the speed of your wireless network. You can select from a range of transmission speeds, or you can select **Auto** to have the Router automatically use the fastest possible data rate and enable the Auto-Fallback feature. Auto-Fallback will negotiate the best possible connection speed between the Router and a wireless client. The default value is **Auto**.

CTS Protection Mode. CTS (Clear-To-Send) Protection Mode should remain disabled unless you are having severe problems with your Wireless-G products not being able to transmit to the Router in an environment with heavy 802.11b traffic. This function boosts the Router's ability to catch all Wireless-G transmissions but will severely decrease performance.

Frame Burst. Enabling this option should provide your network with greater performance, depending on the manufacturer of your wireless products. If you are not sure how to use this option, keep the default, **Disable**.

Beacon Interval. The default value is **100**. Enter a value between 1 and 65,535 milliseconds. The Beacon Interval value indicates the frequency interval of the beacon. A beacon is a packet broadcast by the Router to synchronize the wireless network.

DTIM Interval. This value, between 1 and 255, indicates the interval of the Delivery Traffic Indication Message (DTIM). A DTIM field is a countdown field informing clients of the next window for listening to broadcast and multicast messages. When the Router has buffered broadcast or multicast messages for associated clients, it sends the next DTIM with a DTIM Interval value. Its clients hear the beacons and awaken to receive the broadcast and multicast messages. The default value is **1**.



Figure 6-25: Wireless Tab - Advanced Wireless Settings

Fragmentation Threshold. This value specifies the maximum size for a packet before data is fragmented into multiple packets. If you experience a high packet error rate, you may slightly increase the Fragmentation Threshold. Setting the Fragmentation Threshold too low may result in poor network performance. Only minor reduction of the default value is recommended. In most cases, it should remain at its default value of **2346**.

RTS Threshold. Should you encounter inconsistent data flow, only minor reduction of the default value, **2347**, is recommended. If a network packet is smaller than the preset RTS threshold size, the RTS/CTS mechanism will not be enabled. The Router sends Request to Send (RTS) frames to a particular receiving station and negotiates the sending of a data frame. After receiving an RTS, the wireless station responds with a Clear to Send (CTS) frame to acknowledge the right to begin transmission. The RTS Threshold value should remain at its default value of **2347**.

AP Isolation. This isolates all wireless clients and wireless devices on your network from each other. Wireless devices will be able to communicate with the Router but not with each other. To use this function, select On. AP Isolation is Off by default.

Secure Easy Setup. This feature allows you to enable or disable the SecureEasySetup feature. Select **Disable** to disable the feature and turn off the button's light. The feature is enabled by default.

Change these settings as described here and click the **Save Settings** button to apply your changes or **Cancel Changes** to cancel your changes.

The Security Tab - Firewall

Firewall Protection. This feature employs Stateful Packet Inspection (SPI) for a more detailed review of data packets entering your network environment.

Block WAN Requests. Enable the Block WAN Request feature by checking the box beside **Block Anonymous Internet Requests** and you can prevent your network from being “pinged,” or detected, by other Internet users. The Block WAN Request feature also reinforces your network security by hiding your network ports. Both functions of the Block WAN Request feature make it more difficult for outside users to work their way into your network. This feature is enabled by default. Select **Disabled** to allow anonymous Internet requests.

Filter Multicast. Multicasting allows for multiple transmissions to specific recipients at the same time. If multicasting is permitted, then the Router will allow IP multicast packets to be forwarded to the appropriate computers. Select **Enabled** to filter multicasting, or **Disabled** to disable this feature.

Filter Internet NAT Redirection. This feature uses port forwarding to block access to local servers from local networked computers. Select **Enabled** to filter Internet NAT redirection, or **Disabled** to disable this feature.

Filter IDENT (Port 113). This feature keeps port 113 from being scanned by devices outside of your local network. Select **Enabled** to filter port 113, or **Disabled** to disable this feature.

Change these settings as described here and click the **Save Settings** button to apply your changes or **Cancel Changes** to cancel your changes.

The Security Tab - VPN Passthrough

Use the settings on this tab to allow VPN tunnels using IPSec, PPTP, or L2TP protocols to pass through the Router’s firewall.

IPSec Pass-through. Internet Protocol Security (IPSec) is a suite of protocols used to implement secure exchange of packets at the IP layer. To allow IPSec tunnels to pass through the Router, click **Enable**. IPSec Pass-Through is enabled by default.

PPTP Pass-through. Point-to-Point Tunneling Protocol (PPTP) allows the Point-to-Point Protocol (PPP) to be tunneled through an IP network. To allow PPTP tunnels to pass through the Router, click **Enable**. PPTP Pass-Through is enabled by default.

L2TP Pass-through. Layer 2 Tunneling Protocol is the method used to enable Point-to-Point sessions via the Internet on the Layer 2 level. To allow L2TP tunnels to pass through the Router, click **Enable**. L2TP Pass-Through is enabled by default.



Figure 6-26: Security Tab - Firewall

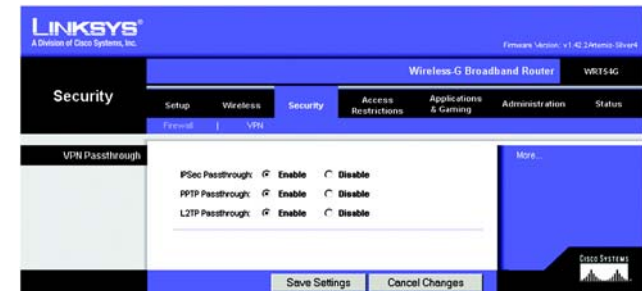


Figure 6-27: Security Tab - VPN Passthrough

Change these settings as described here and click the **Save Settings** button to apply your changes or **Cancel Changes** to cancel your changes.

The Access Restrictions Tab - Internet Access

The *Internet Access* screen allows you to block or allow specific kinds of Internet usage and traffic, such as Internet access, designated services, websites, and inbound traffic during specific days and times.

Internet Access Policy. Access can be managed by a policy. Use the settings on this screen to establish an access policy (after the **Save Settings** button is clicked). Selecting a policy from the drop-down menu will display that policy's settings. To delete a policy, select that policy's number and click the **Delete** button. To view all the policies, click the **Summary** button. (Policies can be deleted from the *Summary* screen by selecting the policy or policies and clicking the **Delete** button. To return to the Internet Access tab, click the **Close** button.)

Status. Policies are disabled by default. To enable a policy, select the policy number from the drop-down menu, and click the radio button beside *Enable*.

You can create two kinds of policies, one kind to manage Internet access and another kind to manage inbound traffic.

To create an Internet Access policy:

1. Select a number from the *Internet Access Policy* drop-down menu.
2. To enable this policy, click the radio button beside *Enable*.
3. Enter a Policy Name in the field provided.
4. Select **Internet Access** as the Policy Type.
5. Click the **Edit List** button to select which PCs will be affected by the policy. The *List of PCs* screen will appear. You can select a PC by MAC Address or IP Address. You can also enter a range of IP Addresses if you want this policy to affect a group of PCs. After making your changes, click the **Save Settings** button to apply your changes or **Cancel Changes** to cancel your changes. Then click the **Close** button.
6. Click the appropriate option, **Deny** or **Allow**, depending on whether you want to block or allow Internet access for the PCs you listed on the *List of PCs* screen.
7. Decide which days and what times you want this policy to be enforced. Select the individual days during which the policy will be in effect, or select **Everyday**. Then enter a range of hours and minutes during which the policy will be in effect, or select **24 Hours**.

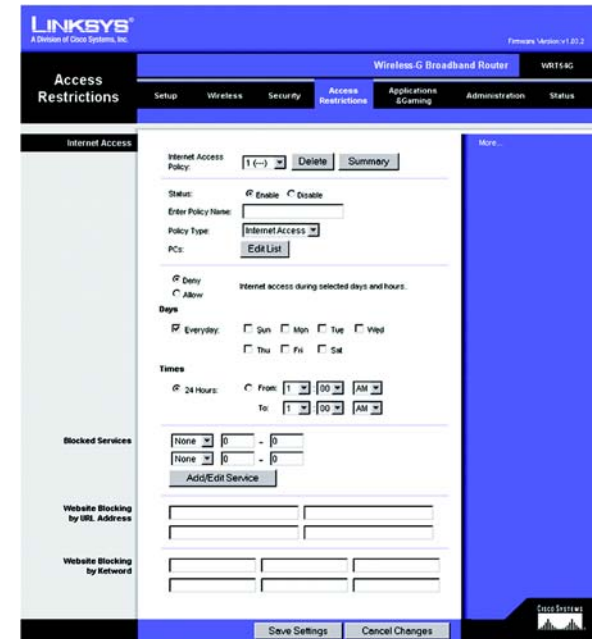


Figure 6-28: Access Restrictions Tab - Internet Access



Figure 6-29: Internet Policy Summary



Figure 6-30: List of PCs

- You can filter access to various services accessed over the Internet, such as FTP or telnet, by selecting services from the drop-down menus next to *Blocked Services*. (You can block up to 20 services.) Then enter the range of ports you want to filter.

If the service you want to block is not listed or you want to edit a service's settings, then click the **Add/Edit Service** button. Then the *Port Services* screen will appear.

To add a service, enter the service's name in the *Service Name* field. Select its protocol from the *Protocol* drop-down menu, and enter its range in the *Port Range* fields. Then click the **Add** button.

To modify a service, select it from the list on the right. Change its name, protocol setting, or port range. Then click the **Modify** button.

To delete a service, select it from the list on the right. Then click the **Delete** button.

When you are finished making changes on the *Port Services* screen, click the **Apply** button to save changes. If you want to cancel your changes, click the **Cancel** button. To close the *Port Services* screen and return to the *Access Restrictions* screen, click the **Close** button.

- If you want to block websites with specific URL addresses, enter each URL in a separate field next to *Website Blocking by URL Address*.
- If you want to block websites using specific keywords, enter each keyword in a separate field next to *Website Blocking by Keyword*.
- Click the **Save Settings** button to save the policy's settings. To cancel the policy's settings, click the **Cancel Changes** button.

To create an Inbound Traffic policy:

- Select **Inbound Traffic** as the Policy Type.
- Select a number from the *Internet Access Policy* drop-down menu.
- To enable this policy, click the radio button beside *Enable*.
- Enter a Policy Name in the field provided.
- Enter the source IP address whose traffic you want to manage. Select the appropriate protocol: **TCP**, **UDP**, or **Both**. Enter the appropriate port range, or select **Any**. Enter the destination IP address whose traffic you want to manage, or select **Any**.



Figure 6-31: Port Services

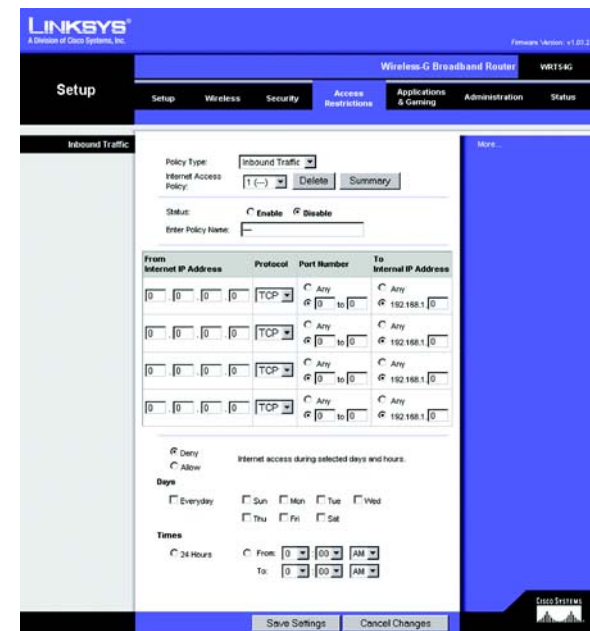


Figure 6-32: Access Restrictions Tab - Inbound Traffic

6. Click the appropriate option, **Deny** or **Allow**, depending on whether you want to block or allow network traffic.
7. Decide which days and what times you want this policy to be enforced. Select the individual days during which the policy will be in effect, or select **Everyday**. Then enter a range of hours and minutes during which the policy will be in effect, or select **24 Hours**.
8. Click the **Save Settings** button to save the policy's settings. To cancel the policy's settings, click the **Cancel Changes** button.

Change these settings as described here and click the **Save Settings** button to apply your changes or **Cancel Changes** to cancel your changes.

The Applications and Gaming Tab - Port Range Forward

The Applications and Gaming Tab allows you to set up public services on your network, such as web servers, ftp servers, e-mail servers, or other specialized Internet applications. (Specialized Internet applications are any applications that use Internet access to perform functions such as videoconferencing or online gaming. Some Internet applications may not require any forwarding.)

To forward a port, enter the information on each line for the criteria required. The criteria are described here.

Application. In this field, enter the name you wish to give the application. Each name can be up to 12 characters.

Start/End. This is the port range. Enter the number that starts the port range under **Start** and the number that ends the range under **End**.

Protocol. Enter the protocol used for this application, either **TCP** or **UDP**, or **Both**.

IP Address. For each application, enter the IP Address of the PC running the specific application.

Enable. Click the **Enable** checkbox to enable port forwarding for the relevant application.

Change these settings as described here and click the **Save Settings** button to apply your changes or **Cancel Changes** to cancel your changes.

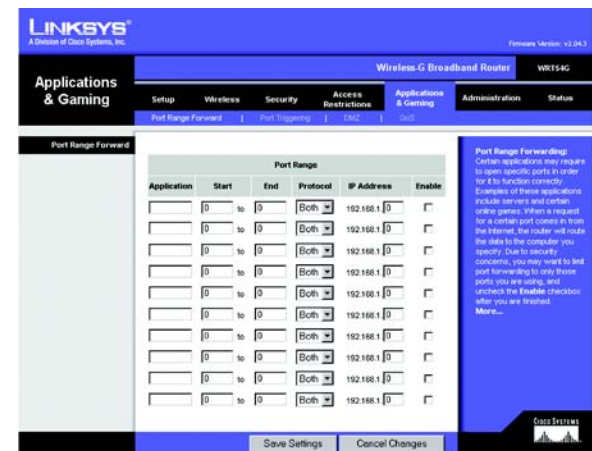


Figure 6-33: Applications and Gaming Tab - Port Range Forward

The Applications & Gaming Tab - Port Triggering

The *Port Triggering* screen allows the Router to watch outgoing data for specific port numbers. The IP address of the computer that sends the matching data is remembered by the Router, so that when the requested data returns through the Router, the data is pulled back to the proper computer by way of IP address and port mapping rules.

Port Triggering

Application. Enter the application name of the trigger.

Triggered Range

For each application, list the triggered port number range. Check with the Internet application documentation for the port number(s) needed.

Start Port. Enter the starting port number of the Triggered Range.

End Port. Enter the ending port number of the Triggered Range.

Forwarded Range

For each application, list the forwarded port number range. Check with the Internet application documentation for the port number(s) needed.

Start Port. Enter the starting port number of the Forwarded Range.

End Port. Enter the ending port number of the Forwarded Range.

Change these settings as described here and click the **Save Settings** button to apply your changes or **Cancel Changes** to cancel your changes.

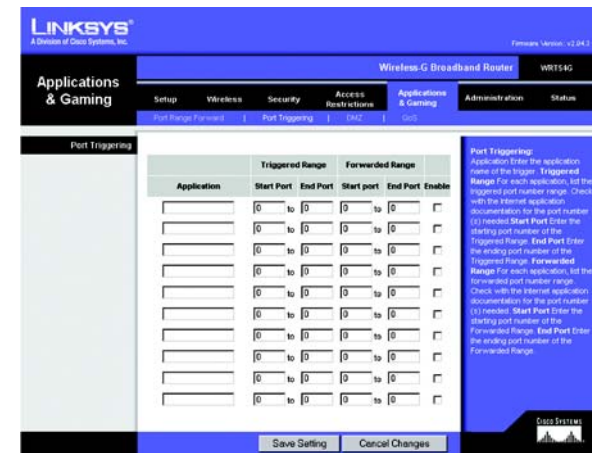


Figure 6-34: Applications and Gaming Tab - Port Triggering

The Applications and Gaming Tab - DMZ

The DMZ feature allows one network user to be exposed to the Internet for use of a special-purpose service such as Internet gaming or videoconferencing. DMZ hosting forwards all the ports at the same time to one PC. The Port Range Forward feature is more secure because it only opens the ports you want to have opened, while DMZ hosting opens all the ports of one computer, exposing the computer to the Internet.

Any PC whose port is being forwarded must have its DHCP client function disabled and should have a new static IP address assigned to it because its IP address may change when using the DHCP function.

To expose one PC, select **Enable**. Then, enter the computer's IP address in the *DMZ Host IP Address* field.

Change these settings as described here and click the **Save Settings** button to apply your changes or **Cancel Changes** to cancel your changes.

The Applications and Gaming Tab - QoS

Quality of Service (QoS) ensures better service to high-priority types of network traffic, which may involve demanding, real-time applications, such as videoconferencing.

There are three types of QoS available, Device Priority, Application Priority, and Ethernet Port Priority.

Enable/Disable. To limit outgoing bandwidth for the QoS policies in use, select **Enable**. Otherwise, select **Disable**.

Upstream Bandwidth. Select the bandwidth to be used from the drop-down menu. This setting allows you to limit the outgoing bandwidth for the QoS policies in use, so you can control how much bandwidth a particular application is allowed to use.

Device Priority

Enter the name of your network device in the *Device name* field, enter its MAC Address, then select its priority from the drop-down menu.

Ethernet Port Priority

Ethernet Port Priority QoS allows you to prioritize performance for four of the Router's ports, LAN Ports 1-4. For each of these ports, select **High** or **Low** for *Priority*. For Flow Control, if you want the Router to control the transmission of data between network devices, select **Enable**. To disable this feature, select **Disable**. The Router's other four ports will be automatically assigned low priority. Incoming Rate Limit limits the incoming



Figure 6-35: Applications and Gaming Tab - DMZ



Figure 6-36: Applications and Gaming Tab - QoS

bandwidth. To use this feature, select **8M**, **4M**, **2M**, **1M**, **512K**, **256K**, or **128K** (M stands for Mbps, while K stands for kbps). If you do not want to use this feature, keep the default, **Disable**.

Ethernet Port Priority QoS does not require support from your ISP because the prioritized ports are LAN ports going out to your network.

Application Port Priority

Application Port Priority QoS manages information as it is transmitted and received. Depending on the settings of the *QoS* screen, this feature will assign information a high or low priority for the five preset applications and three additional applications that you specify. For each application, select **High** or **Low** for *Priority*. For *Specific Port#*, you can add three additional applications by entering their respective port numbers in the *Specific Port#* fields.

FTP (File Transfer Protocol). A protocol used to transfer files over a TCP/IP network (Internet, UNIX, etc.). For example, after developing the HTML pages for a website on a local machine, they are typically uploaded to the web server using FTP.

HTTP (HyperText Transport Protocol). The communications protocol used to connect to servers on the World Wide Web. Its primary function is to establish a connection with a web server and transmit HTML pages to the client web browser.

Telnet. A terminal emulation protocol commonly used on Internet and TCP/IP-based networks. It allows a user at a terminal or computer to log onto a remote device and run a program.

SMTP (Simple Mail Transfer Protocol). The standard e-mail protocol on the Internet. It is a TCP/IP protocol that defines the message format and the message transfer agent (MTA), which stores and forwards the mail.

POP3 (Post Office Protocol 3). A standard mail server commonly used on the Internet. It provides a message store that holds incoming e-mail until users log on and download it. POP3 is a simple system with little selectivity. All pending messages and attachments are downloaded at the same time. POP3 uses the SMTP messaging protocol.

Application Name. You can add three additional applications by entering their names in the *Application Name* fields.

Change these settings as described here and click the **Save Settings** button to apply your changes or **Cancel Changes** to cancel your changes.

The Administration Tab - Management

This section of the Administration tab allows the network's administrator to manage specific Router functions for access and security.

Local Router Access. You can change the Router's password from here. Enter a new Router password and then type it again in the *Re-enter to confirm* field to confirm.

Web Access. HTTP (HyperText Transport Protocol) - The communications protocol used to connect to servers on the World Wide Web. HTTPS - Uses SSL (Secured Socket Layer) to encrypt data transmitted for higher security. Select **HTTP** or **HTTPS**. Wireless Access Web - If you are using your Wireless Router in a public domain where you are giving wireless access to your guests, you can disable wireless access to the router's web-based utility. You will only be able to access the web-based utility via a wired connection if you disable the setting. Select **Enable** to enable wireless access to the Router's web-based utility or **Disable** to disable wireless access to the utility.

Remote Router Access. To access the Router remotely, from outside the network, verify that **Enable** is selected. Then, enter the port number that will be open to outside access. You will need to enter the Router's password when accessing the Router this way, as usual.

UPnP. When using UPnP features, select **Enable**. Because allowing this may present a risk to security, this feature is disabled by default.

Change these settings as described here and click the **Save Settings** button to apply your changes or **Cancel Changes** to cancel your changes.

The Administration Tab - Log

The Router can keep logs of all traffic for your Internet connection. To disable the Log function, keep the default setting, **Disable**. To monitor traffic between the network and the Internet, select **Enable**. When you wish to view the logs, click **Incoming Log** or **Outgoing Log**, depending on which you wish to view.

Change these settings as described here and click the **Save Settings** button to apply your changes or **Cancel Changes** to cancel your changes.

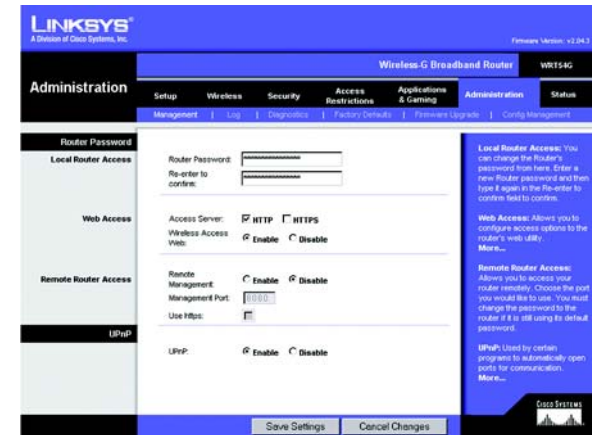


Figure 6-37: Administration Tab - Management



Figure 6-38: Administration Tab - Log

The Administration Tab - Diagnostics

The diagnostic tests (Ping and Traceroute) allow you to check the connections of your network components.

Ping Test. The Ping test will check the status of a connection. Click the **Ping** button to open the *Ping Test* screen. Enter the address of the PC whose connection you wish to test and how many times you wish to test it. Then, click the **Ping** button. The *Ping Test* screen will then display the test results. To stop the test, click the **Stop** button. Click the **Clear Log** button to clear the screen. Click the **Close** button to return to the *Diagnostics* screen.

Traceroute Test. To test the performance of a connect, click the **Traceroute** button. Enter the address of the PC whose connection you wish to test and click the **Traceroute** button. The *Traceroute* screen will then display the test results. To stop the test, click the **Stop** button. Click the **Clear Log** button to clear the screen. Click the **Close** button to return to the *Diagnostics* screen.

Change these settings as described here and click the **Save Settings** button to apply your changes or **Cancel Changes** to cancel your changes.

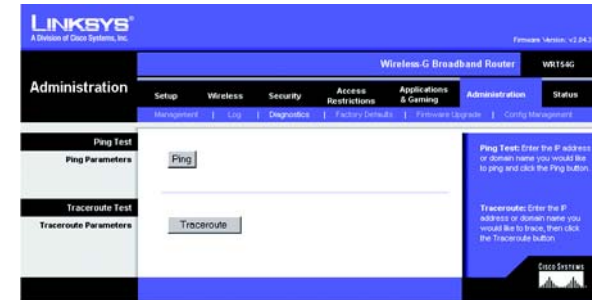


Figure 6-39: Administration Tab - Diagnostics



Figure 6-40: The Ping Test

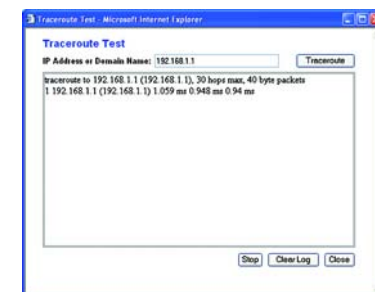


Figure 6-41: The Traceroute Test

The Administration Tab - Factory Defaults

Click the **Yes** button to reset all configuration settings to their default values, and then click the **Save Settings** button. Any settings you have saved will be lost when the default settings are restored. This feature is disabled by default.



Figure 6-42: Administration Tab - Factory Defaults

The Administration Tab - Firmware Upgrade

Firmware can be upgraded by clicking the **Upgrade** button after browsing for the firmware, which you can download from the Linksys website. Do not upgrade your firmware unless you are experiencing problems with the Router. For more information about upgrading firmware, refer to “Appendix C: Upgrading Firmware”.



Figure 6-43: Administration Tab - Firmware Upgrade

The Administration Tab - Config Management

This screen is used to back up or restore the Router’s configuration file.

To back up the Router’s configuration file, click the **Backup** button. Then follow the on-screen instructions.

To restore the Router’s configuration file, click the **Browse** button to locate the file, and follow the on-screen instructions. After you have selected the file, click the **Restore** button.

Change these settings as described here and click the **Save Settings** button to apply your changes or **Cancel Changes** to cancel your changes



Figure 6-44: Administration Tab - Config Management

The Status Tab - Router

The *Router* screen on the Status Tab displays the Router's current status.

Firmware Version. This is the Router's current firmware.

Current Time. This shows the time, as you set on the Setup Tab.

MAC Address. This is the Router's MAC Address, as seen by your ISP.

Router Name. This is the specific name for the Router, which you set on the Setup Tab.

Host Name. If required by your ISP, this would have been entered on the Setup Tab.

Domain Name. If required by your ISP, this would have been entered on the Setup Tab.

Configuration Type. This shows the information required by your ISP for connection to the Internet. This information was entered on the Setup Tab. You can **Connect** or **Disconnect** your connection here by clicking on that button.



Figure 6-45: Status Tab - Router

The Status Tab - Local Network

The *Local Network* screen on the Status Tab displays the status of your network.

MAC Address. This is the Router's MAC Address, as seen on your local, Ethernet network.

IP Address. This shows the Router's IP Address, as it appears on your local, Ethernet network.

Subnet Mask. When the Router is using a Subnet Mask, it is shown here.

DHCP Server. If you are using the Router as a DHCP server, that will be displayed here.

Start IP Address. For the range of IP Addresses used by devices on your local, Ethernet network, the beginning of that range is shown here.

End IP Address. For the range of IP Addresses used by devices on your local, Ethernet network, the end of that range is shown here.

DHCP Clients Table. Clicking this button will open a screen to show you which PCs are utilizing the Router as a DHCP server. You can delete PCs from that list, and sever their connections, by checking a **Delete** box and clicking the **Delete** button.



Figure 6-46: Status Tab - Local Network

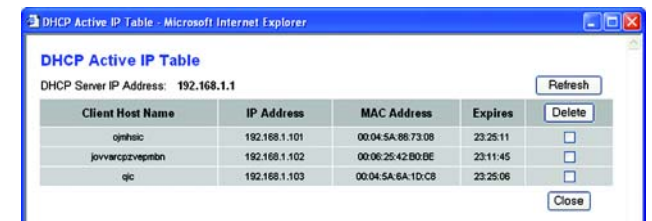


Figure 6-47: DHCP Clients Table

The Status Tab - Wireless

The *Wireless* screen on the Status Tab displays the status of your wireless network.

MAC Address. This is the Router's MAC Address, as seen on your local, wireless network.

Mode. As selected from the Wireless tab, this will display the wireless mode (Mixed, G-Only, or Disabled) used by the network.

SSID. As entered on the Wireless tab, this will display the wireless network name or SSID.

DHCP Server. If you are using the Router as a DHCP server, that will be displayed here.

Channel. As entered on the Wireless tab, this will display the channel on which your wireless network is broadcasting.

Encryption Function. As selected on the Security Tab, this will display what type of encryption the Router uses for security.



Figure 6-48: Status Tab - Wireless

Appendix A: Troubleshooting

This appendix consists of two parts: “Common Problems and Solutions” and “Frequently Asked Questions.” Provided are possible solutions to problems that may occur during the installation and operation of the Router. Read the descriptions below to help you solve your problems. If you can’t find an answer here, check the Linksys website at www.linksys.com/international.

Common Problems and Solutions

1. I'm trying to access the Router's Web-based Utility, but I do not see the login screen. Instead, I see a screen saying, "404 Forbidden."

If you are using Windows Explorer, perform the following steps until you see the Web-based Utility's login screen (Netscape Navigator will require similar steps):

1. Click **File**. Make sure *Work Offline* is NOT checked.
2. Press **CTRL + F5**. This is a hard refresh, which will force Windows Explorer to load new webpages, not cached ones.
3. Click **Tools**. Click **Internet Options**. Click the **Security** tab. Click the **Default level** button. Make sure the security level is Medium or lower. Then click the **OK** button.

2. I need to set a static IP address on a PC.

You can assign a static IP address to a PC by performing the following steps:

- For Windows 98SE and Me:
 1. Click **Start**, **Settings**, and **Control Panel**. Double-click **Network**.
 2. In The following network components are installed box, select the TCP/IP-> associated with your Ethernet adapter. If you only have one Ethernet adapter installed, you will only see one TCP/IP line with no association to an Ethernet adapter. Highlight it and click the **Properties** button.
 3. In the TCP/IP properties window, select the **IP address** tab, and select **Specify an IP address**. Enter a unique IP address that is not used by any other computer on the network connected to the Router. Make sure that each IP address is unique for each PC or network device.
 4. Click the **Gateway** tab, and in the New Gateway prompt, enter **192.168.1.1**, which is the default IP address of the Router. Click the **Add** button to accept the entry.
 5. Click the **DNS** tab, and make sure the DNS Enabled option is selected. Enter the Host and Domain names (e.g., John for Host and home for Domain). Enter the DNS entry provided by your ISP. If your ISP has not provided the DNS IP address, contact your ISP to get that information or go to its website for the information.
 6. Click the **OK** button in the TCP/IP properties window, and click **Close** or the **OK** button for the Network window.
 7. Restart the computer when asked.

- For Windows 2000:
 1. Click **Start**, **Settings**, and **Control Panel**. Double-click **Network and Dial-Up Connections**.
 2. Right-click the Local Area Connection that is associated with the Ethernet adapter you are using, and select the **Properties** option.
 3. In the Components checked are used by this connection box, highlight **Internet Protocol (TCP/IP)**, and click the **Properties** button. Select **Use the following IP address** option.
 4. Enter a unique IP address that is not used by any other computer on the network connected to the Router.
 5. Enter the Subnet Mask, **255.255.255.0**.
 6. Enter the Default Gateway, **192.168.1.1** (Router's default IP address).
 7. Toward the bottom of the window, select **Use the following DNS server addresses**, and enter the Preferred DNS server and Alternative DNS server (provided by your ISP). Contact your ISP or go on its website to find the information.
 8. Click the **OK** button in the Internet Protocol (TCP/IP) Properties window, and click the **OK** button in the Local Area Connection Properties window.
 9. Restart the computer if asked.
- For Windows XP:

The following instructions assume you are running Windows XP with the default interface. If you are using the Classic interface (where the icons and menus look like previous Windows versions), please follow the instructions for Windows 2000.

 1. Click **Start** and **Control Panel**.
 2. Click the **Network and Internet Connections** icon and then the **Network Connections** icon.
 3. Right-click the **Local Area Connection** that is associated with the Ethernet adapter you are using, and select the **Properties** option.
 4. In the This connection uses the following items box, highlight **Internet Protocol (TCP/IP)**. Click the **Properties** button.
 5. Enter a unique IP address that is not used by any other computer on the network connected to the Router.
 6. Enter the Subnet Mask, **255.255.255.0**.
 7. Enter the Default Gateway, **192.168.1.1** (Router's default IP address).
 8. Toward the bottom of the window, select **Use the following DNS server addresses**, and enter the Preferred DNS server and Alternative DNS server (provided by your ISP). Contact your ISP or go on its website to find the information.
 9. Click the **OK** button in the Internet Protocol (TCP/IP) Properties window. Click the **OK** button in the Local Area Connection Properties window.

3. I want to test my Internet connection.

A Check your TCP/IP settings.

For Windows 98SE, Me, 2000, and XP:

- Refer to Windows Help for details. Make sure Obtain IP address automatically is selected in the settings.

B Open a command prompt.

For Windows 98SE and Me:

- Click **Start** and **Run**. In the *Open* field, type **command**. Press the **Enter** key or click the **OK** button.

For Windows 2000 and XP:

- Click **Start** and **Run**. In the *Open* field, type **cmd**. Press the **Enter** key or click the **OK** button. In the command prompt, type **ping 192.168.1.1** and press the **Enter** key.
- If you get a reply, the computer is communicating with the Router.
- If you do NOT get a reply, please check the cable, and make sure Obtain an IP address automatically is selected in the TCP/IP settings for your Ethernet adapter.

C In the command prompt, type **ping** followed by your Internet or WAN IP address and press the **Enter** key. The Internet or WAN IP Address can be found on the Status screen of the Router's web-based utility. For example, if your Internet or WAN IP address is 1.2.3.4, you would enter **ping 1.2.3.4** and press the **Enter** key.

- If you get a reply, the computer is connected to the Router.
- If you do NOT get a reply, try the ping command from a different computer to verify that your original computer is not the cause of the problem.

D In the command prompt, type **ping www.yahoo.com** and press the **Enter** key.

- If you get a reply, the computer is connected to the Internet. If you cannot open a webpage, try the ping command from a different computer to verify that your original computer is not the cause of the problem.
- If you do NOT get a reply, there may be a problem with the connection. Try the ping command from a different computer to verify that your original computer is not the cause of the problem.

4. I am not getting an IP address on the Internet with my Internet connection.

- Refer to "Problem #3, I want to test my Internet connection" to verify that you have connectivity.
- If you need to register the MAC address of your Ethernet adapter with your ISP, please see "Appendix E: Finding the MAC address and IP Address for Your Ethernet Adapter." If you need to clone the MAC address of your Ethernet adapter onto the Router, see the System section of "Chapter 6: Configuring the Wireless-G Broadband Router" for details.
- Make sure you are using the right Internet connection settings. Contact your ISP to see if your Internet connection type is DHCP, Static IP Address, or PPPoE (commonly used by DSL consumers). Please refer to the Setup section of "Chapter 6: Configuring the Wireless-G Broadband Router" for details on Internet connection settings.
- Make sure you have the right cable. Check to see if the Internet column has a solidly lit Link/Act LED.
- Make sure the cable connecting from your cable or DSL modem is connected to the Router's Internet port. Verify that the Status page of the Router's web-based utility shows a valid IP address from your ISP.
- Turn off the computer, Router, and cable/DSL modem. Wait 30 seconds, and then turn on the Router, cable/DSL modem, and computer. Check the Status tab of the Router's web-based utility to see if you get an IP address.

5. I am not able to access the Setup page of the Router's web-based utility.

- Refer to “Problem #3, I want to test my Internet connection” to verify that your computer is properly connected to the Router.
- Refer to “Appendix E: Finding the MAC Address and IP address for Your Ethernet Adapter” to verify that your computer has an IP Address, Subnet Mask, Gateway, and DNS.
- Set a static IP address on your system; refer to “Problem #2: I need to set a static IP address.”
- Refer to “Problem #10: I am a PPPoE user, and I need to remove the proxy settings or the dial-up pop-up window.”

6. I need to set up a server behind my Router and make it available to the public.

To use a server like a web, ftp, or mail server, you need to know the respective port numbers they are using. For example, port 80 (HTTP) is used for web; port 21 (FTP) is used for FTP, and port 25 (SMTP outgoing) and port 110 (POP3 incoming) are used for the mail server. You can get more information by viewing the documentation provided with the server you installed.

Follow these steps to set up port forwarding through the Router's web-based utility. We will be setting up web, ftp, and mail servers.

1. Access the Router's web-based utility by going to <http://192.168.1.1> or the IP address of the Router. Go to the Applications & Gaming => Port Range Forward tab.
2. Enter any name you want to use for the Application.
3. Enter the Start and End Port range of the service you are using. For example, if you have a web server, you would enter the range 80 to 80.
4. Select the protocol(s) you will be using, TCP and/or UDP.
5. Enter the IP address of the PC or network device that you want the port server to go to. For example, if the web server's Ethernet adapter IP address is 192.168.1.100, you would enter 100 in the field provided. Check “Appendix E: Finding the MAC Address and IP Address for Your Ethernet Adapter” for details on getting an IP address.
6. Check the **Enable** option for the port services you want to use. Consider the example below:

Application	Start and End	Protocol	IP Address	Enabled
Web server	80 to 80	Both	192.168.1.100	X
FTP server	21 to 21	TCP	192.168.1.101	X
SMTP (outgoing)	25 to 25	Both	192.168.1.102	X
POP3 (incoming)	110 to 110	Both	192.168.1.102	X

When you have completed the configuration, click the **Save Settings** button.

7. I need to set up online game hosting or use other Internet applications.

If you want to play online games or use Internet applications, most will work without doing any port forwarding or DMZ hosting. There may be cases when you want to host an online game or Internet application. This would require you to set up the Router to deliver incoming packets or data to a specific computer. This also applies to the Internet applications you are using. The best way to get the information on what port services to use is to go to the website of the online game or application you want to use. Follow these steps to set up online game hosting or use a certain Internet application:

1. Access the Router's web interface by going to <http://192.168.1.1> or the IP address of the Router. Go to the Applications & Gaming => Port Range Forward tab.
2. Enter any name you want to use for the Application.
3. Enter the Start and End Port range of the service you are using. For example, if you want to host Unreal Tournament (UT), you would enter the range 7777 to 27900.
4. Select the protocol(s) you will be using, TCP and/or UDP.
5. Enter the IP address of the PC or network device that you want the port server to go to. For example, if the web server's Ethernet adapter IP address is 192.168.1.100, you would enter 100 in the field provided. Check "Appendix E: Finding the MAC Address and IP Address for Your Ethernet Adapter" for details on getting an IP address.
6. Check the **Enable** option for the port services you want to use. Consider the example below:

Application	Start and End	Protocol	IP Address	Enabled
UT	7777 to 27900	Both	192.168.1.100	X
Half-life	27015 to 27015	Both	192.168.1.105	X
PC Anywhere	5631 to 5631	UDP	192.168.1.102	X
VPN IPSEC	500 to 500	UDP	192.168.1.100	X

When you have completed the configuration, click the **Save Settings** button.

8. I can't get the Internet game, server, or application to work.

If you are having difficulties getting any Internet game, server, or application to function properly, consider exposing one PC to the Internet using DeMilitarized Zone (DMZ) hosting. This option is available when an application requires too many ports or when you are not sure which port services to use. Make sure you disable all the forwarding entries if you want to successfully use DMZ hosting, since forwarding has priority over DMZ hosting. (In other words, data that enters the Router will be checked first by the forwarding settings. If the port number that the data enters from does not have port forwarding, then the Router will send the data to whichever PC or network device you set for DMZ hosting.)

Follow these steps to set DMZ hosting:

1. Access the Router's web-based utility by going to <http://192.168.1.1> or the IP address of the Router. Go to the Applications & Gaming => Port Range Forward tab.
2. Disable or remove the entries you have entered for forwarding. Keep this information in case you want to use it at a later time.
3. Go to the Applications & Gaming => DMZ tab.
4. Select **Enable** next to DMZ. In the *Client PC IP Address* field, enter the IP address of the computer you want exposed to the Internet. This will bypass the NAT technology for that computer. Please refer to "Appendix E: Finding the MAC Address and IP Address for Your Ethernet Adapter" for details on getting an IP address.
5. Once completed with the configuration, click the **Save Settings** button.

9. I forgot my password, or the password prompt always appears when I am saving settings to the Router.

Reset the Router to factory default by pressing the Reset button for 10 seconds and then releasing it. If you are still getting prompted for a password when saving settings, then perform the following steps:

1. Access the Router's web-based utility by going to <http://192.168.1.1> or the IP address of the Router. Enter the default password admin, and click the Administration => Management tab.
2. Enter a different password in the *Router Password* field, and enter the same password in the second field to confirm the password.
3. Click the **Save Settings** button.

10. I am a PPPoE user, and I need to remove the proxy settings or the dial-up pop-up window.

If you have proxy settings, you need to disable these on your computer. Because the Router is the gateway for the Internet connection, the computer does not need any proxy settings to gain access. Please follow these directions to verify that you do not have any proxy settings and that the browser you use is set to connect directly to the LAN.

- For Microsoft Internet Explorer 5.0 or higher:
 1. Click **Start, Settings, and Control Panel**. Double-click Internet Options.
 2. Click the **Connections** tab.
 3. Click the **LAN settings** button and remove anything that is checked.
 4. Click the **OK** button to go back to the previous screen.
 5. Click the option **Never dial a connection**. This will remove any dial-up pop-ups for PPPoE users.
- For Netscape 4.7 or higher:
 1. Start **Netscape Navigator**, and click **Edit, Preferences, Advanced, and Proxies**.
 2. Make sure you have Direct connection to the Internet selected on this screen.
 3. Close all the windows to finish.

11. To start over, I need to set the Router to factory default.

Hold the **Reset** button for 10 seconds and then release it. This will return the password, forwarding, and other settings on the Router to the factory default settings. In other words, the Router will revert to its original factory configuration.

12. I need to upgrade the firmware.

In order to upgrade the firmware with the latest features, you need to go to the Linksys website and download the latest firmware at www.linksys.com/international.

Follow these steps:

1. Go to the Linksys website at <http://www.linksys.com/international> and download the latest firmware.
2. To upgrade the firmware, follow the steps in “Appendix C: Upgrading Firmware.”

13. The firmware upgrade failed, and/or the Power LED is flashing.

The upgrade could have failed for a number of reasons. Follow these steps to upgrade the firmware and/or make the Power LED stop flashing:

- If the firmware upgrade failed, use the TFTP program (it was downloaded along with the firmware). Open the pdf that was downloaded along with the firmware and TFTP program, and follow the pdf's instructions.
- Set a static IP address on the PC; refer to “Problem #2, I need to set a static IP address.” Use the following IP address settings for the computer you are using:
IP Address: 192.168.1.50
Subnet Mask: 255.255.255.0
Gateway: 192.168.1.1
- Perform the upgrade using the TFTP program or the Administration tab of the Router's web-based utility.

14. My DSL service's PPPoE is always disconnecting.

PPPoE is not actually a dedicated or always-on connection. The DSL ISP can disconnect the service after a period of inactivity, just like a normal phone dial-up connection to the Internet.

- There is a setup option to “keep alive” the connection. This may not always work, so you may need to re-establish connection periodically.
 1. To connect to the Router, go to the web browser, and enter <http://192.168.1.1> or the IP address of the Router.
 2. Enter the password, if asked. (The default password is admin.)
 3. On the *Setup* screen, select the option **Keep Alive**, and set the Redial Period option at 20 (seconds).
 4. Click the **Save Settings** button.
 5. Click the **Status** tab, and click the **Connect** button.
 6. You may see the login status display as Connecting. Press the F5 key to refresh the screen, until you see the login status display as Connected.
- Click the **Save Settings** button to continue.
- If the connection is lost again, follow steps 1- 6 to re-establish connection.

15. I can't access my e-mail, web or I am getting corrupted data from the Internet.

The Maximum Transmission Unit (MTU) setting may need to be adjusted. By default, the MTU is set at 1500. For most DSL users, it is strongly recommended to use MTU 1492.

- If you are having some difficulties, perform the following steps:
 1. To connect to the Router, go to the web browser, and enter `http://192.168.1.1` or the IP address of the Router.
 2. Enter the password, if asked. (The default password is admin.)
 3. Look for the MTU option, and select **Manual**. In the *Size* field, enter 1492.
 4. Click the **Save Settings** button to continue.
- If your difficulties continue, change the Size to different values. Try this list of values, one value at a time, in this order, until your problem is solved:
 - 1462
 - 1400
 - 1362
 - 1300

16. The Power LED keeps flashing.

The Power LED flashes when the device is first powered up. Meantime, the system will boot up itself and check for proper operation. After finishing the checking procedure, the LED stays solid to show that the system is working fine. If the LED keeps flashing after this time, the device is not working properly. Try to flash the firmware by assigning a static IP address to the computer, and then upgrade the firmware. Try using the following settings, IP Address: 192.168.1.50 and Subnet Mask: 255.255.255.0.

17. When I enter a URL or IP address, I get a time-out error or am prompted to retry.

- Check if other PCs work. If they do, ensure that your workstation's IP settings are correct (IP Address, Subnet Mask, Default Gateway, and DNS). Restart the computer that is having a problem.
- If the PCs are configured correctly, but still not working, check the Router. Ensure that it is connected and powered on. Connect to it and check its settings. (If you cannot connect to it, check the LAN and power connections.)
- If the Router is configured correctly, check your Internet connection (DSL/cable modem, etc.) to see if it is working correctly. You can remove the Router to verify a direct connection.
- Manually configure the TCP/IP settings with a DNS address provided by your ISP.
- Make sure that your browser is set to connect directly and that any dial-up is disabled. For Internet Explorer, click **Tools, Internet Options**, and then the **Connection** tab. Make sure that Internet Explorer is set to **Never dial a connection**. For Netscape Navigator, click **Edit, Preferences, Advanced**, and **Proxy**. Make sure that Netscape Navigator is set to **Direct connection to the Internet**.

Frequently Asked Questions

After using SecureEasySetup, my existing wireless devices can no longer connect to the Router.

SecureEasySetup uses WPA-Personal encryption. If your current wireless devices do not support WPA-Personal security, then you cannot use SecureEasySetup on your network. You will need to manually configure your network security using the encryption supported by your existing devices. Re-run the Setup Wizard. On the *Welcome* screen for the Setup Wizard, click **Click Here to Start** and follow the on-screen instructions. On the *Configure Wireless Settings* screen, click **Enter Wireless Settings Manually** and continue to follow the on-screen instructions. For more information, refer to “Chapter 5: Setting up the Wireless-G Broadband Router.”

How do I set up additional devices using SecureEasySetup?

Repeat the SecureEasySetup process for each device until all of your devices have been configured.

Where is my SecureEasySetup button?

On the Router, the SecureEasySetup button is located on the front panel. The button should be lighted either orange or white. For other SecureEasySetup devices, refer to each wireless device's documentation to locate the button on that device.

I have devices that support WPA-Personal security, but do not have SecureEasySetup. Can I still use SecureEasySetup?

Yes. Print out the wireless security settings at the end of the SecureEasySetup process, and then manually configure the settings for your non-SecureEasySetup devices. Refer to each wireless device's documentation for instructions on how to enter these settings.

What is the maximum number of IP addresses that the Router will support?

The Router will support up to 253 IP addresses.

Is IPSec Pass-Through supported by the Router?

Yes, it is a built-in feature that the Router automatically enables.

Where is the Router installed on the network?

In a typical environment, the Router is installed between the cable/DSL modem and the LAN. Plug the Router into the cable/DSL modem's Ethernet port.

Does the Router support IPX or AppleTalk?

No. TCP/IP is the only protocol standard for the Internet and has become the global standard for communications. IPX, a NetWare communications protocol used only to route messages from one node to another, and AppleTalk, a communications protocol used on Apple and Macintosh networks, can be used for LAN to LAN connections, but those protocols cannot connect from the Internet to a LAN.

Does the Internet connection of the Router support 100Mbps Ethernet?

The Router's current hardware design supports up to 100Mbps Ethernet on its Internet port; however, the Internet connection speed will vary depending on the speed of your broadband connection. The Router also supports 100Mbps over the auto-sensing Fast Ethernet 10/100 switch on the LAN side of the Router.

What is Network Address Translation and what is it used for?

Network Address Translation (NAT) translates multiple IP addresses on the private LAN to one public address that is sent out to the Internet. This adds a level of security since the address of a PC connected to the private LAN is never transmitted on the Internet. Furthermore, NAT allows the Router to be used with low cost Internet accounts, such as DSL or cable modems, when only one TCP/IP address is provided by the ISP. The user may have many private addresses behind this single address provided by the ISP.

Does the Router support any operating system other than Windows 98SE, Windows Millennium, Windows 2000, or Windows XP?

Yes, but Linksys does not, at this time, provide technical support for setup, configuration or troubleshooting of any non-Windows operating systems.

Does the Router support ICQ send file?

Yes, with the following fix: click ICQ menu -> preference -> connections tab->, and check I am behind a firewall or proxy. Then set the firewall time-out to 80 seconds in the firewall setting. The Internet user can then send a file to a user behind the Router.

I set up an Unreal Tournament Server, but others on the LAN cannot join. What do I need to do?

If you have a dedicated Unreal Tournament server running, you need to create a static IP for each of the LAN computers and forward ports 7777, 7778, 7779, 7780, 7781, and 27900 to the IP address of the server. You can also use a port forwarding range of 7777 ~ 27900. If you want to use the UT Server Admin, forward another port. (Port 8080 usually works well but is used for remote admin. You may have to disable this.) Then in the [UWeb.WebServer] section of the server.ini file, set the ListenPort to 8080 (to match the mapped port above) and ServerName to the IP assigned to the Router from your ISP.

Can multiple gamers on the LAN get on one game server and play simultaneously with just one public IP address?

It depends on which network game or what kind of game server you are using. For example, Unreal Tournament supports multi-login with one public IP.

How do I get Half-Life: Team Fortress to work with the Router?

The default client port for Half-Life is 27005. The computers on your LAN need to have "+clientport 2700x" added to the HL shortcut command line; the x would be 6, 7, 8, and on up. This lets multiple computers connect to the same server. One problem: Version 1.0.1.6 won't let multiple computers with the same CD key connect at

the same time, even if on the same LAN (not a problem with 1.0.1.3). As far as hosting games, the HL server does not need to be in the DMZ. Just forward port 27015 to the local IP address of the server computer.

How can I block corrupted FTP downloads?

If you are experiencing corrupted files when you download a file with your FTP client, try using another FTP program.

The web page hangs; downloads are corrupt, or nothing but junk characters are being displayed on the screen. What do I need to do?

Force your Ethernet adapter to 10Mbps or half duplex mode, and turn off the “Auto-negotiate” feature of your Ethernet adapter as a temporary measure. (Please look at the Network Control Panel in your Ethernet adapter’s Advanced Properties tab.) Make sure that your proxy setting is disabled in the browser. Check our website at www.linksys.com/international for more information.

If all else fails in the installation, what can I do?

Reset the Router by holding down the reset button until the Power LED fully turns on and off. Reset your cable or DSL modem by powering the unit off and then on. Obtain and flash the latest firmware release that is readily available on the Linksys website, www.linksys.com/international.

How will I be notified of new Router firmware upgrades?

All Linksys firmware upgrades are posted on the Linksys website at www.linksys.com/international, where they can be downloaded for free. To upgrade the Router’s firmware, use the Administration - Firmware Upgrade tab of the Router’s web-based utility. If the Router’s Internet connection is working well, there is no need to download a newer firmware version, unless that version contains new features that you would like to use. Downloading a more current version of Router firmware will not enhance the quality or speed of your Internet connection, and may disrupt your current connection stability.

Will the Router function in a Macintosh environment?

Yes, but the Router’s setup pages are accessible only through Internet Explorer 4.0 or Netscape Navigator 4.0 or higher for Macintosh.

I am not able to get the web configuration screen for the Router. What can I do?

You may have to remove the proxy settings on your Internet browser, e.g., Netscape Navigator or Internet Explorer. Or remove the dial-up settings on your browser. Check with your browser documentation, and make sure that your browser is set to connect directly and that any dial-up is disabled. Make sure that your browser is set to connect directly and that any dial-up is disabled. For Internet Explorer, click Tools, Internet Options, and then the Connection tab. Make sure that Internet Explorer is set to Never dial a connection. For Netscape Navigator, click Edit, Preferences, Advanced, and Proxy. Make sure that Netscape Navigator is set to Direct connection to the Internet.

What is DMZ Hosting?

Demilitarized Zone (DMZ) allows one IP address (computer) to be exposed to the Internet. Some applications require multiple TCP/IP ports to be open. It is recommended that you set your computer with a static IP if you want to use DMZ Hosting. To get the LAN IP address, see “Appendix E: Finding the MAC Address and IP Address for Your Ethernet Adapter.”

If DMZ Hosting is used, does the exposed user share the public IP with the Router?

No.

Does the Router pass PPTP packets or actively route PPTP sessions?

The Router allows PPTP packets to pass through.

Is the Router cross-platform compatible?

Any platform that supports Ethernet and TCP/IP is compatible with the Router.

How many ports can be simultaneously forwarded?

Theoretically, the Router can establish 520 sessions at the same time, but you can only forward 10 ranges of ports.

What are the advanced features of the Router?

The Router’s advanced features include advanced wireless settings, filters, access restriction policies, port forwarding, advanced routing, and DDNS.

How do I get mIRC to work with the Router?

Under the Port Forwarding tab, set port forwarding to 113 for the PC on which you are using mIRC.

Can the Router act as my DHCP server?

Yes. The Router has DHCP server software built-in.

Can I run an application from a remote computer over the wireless network?

This will depend on whether or not the application is designed to be used over a network. Consult the application’s documentation to determine if it supports operation over a network.

What is the IEEE 802.11g standard?

It is one of the IEEE standards for wireless networks. The 802.11g standard allows wireless networking hardware from different manufacturers to communicate, provided that the hardware complies with the 802.11g standard. The 802.11g standard states a maximum data transfer rate of 54Mbps and an operating frequency of 2.4GHz.

What is the IEEE 802.11b standard?

It is one of the IEEE standards for wireless networks. The 802.11b standard allows wireless networking hardware from different manufacturers to communicate, provided that the hardware complies with the 802.11b standard. The 802.11b standard states a maximum data transfer rate of 11Mbps and an operating frequency of 2.4GHz.

What IEEE 802.11g features are supported?

The product supports the following IEEE 802.11g functions:

- CSMA/CA plus Acknowledge protocol
- OFDM protocol
- Multi-Channel Roaming
- Automatic Rate Selection
- RTS/CTS feature
- Fragmentation
- Power Management

What IEEE 802.11b features are supported?

The product supports the following IEEE 802.11b functions:

- CSMA/CA plus Acknowledge protocol
- Multi-Channel Roaming
- Automatic Rate Selection
- RTS/CTS feature
- Fragmentation
- Power Management

What is ad-hoc mode?

When a wireless network is set to ad-hoc mode, the wireless-equipped computers are configured to communicate directly with each other. The ad-hoc wireless network will not communicate with any wired network.

What is infrastructure mode?

When a wireless network is set to infrastructure mode, the wireless network is configured to communicate with a wired network through a wireless access point.

What is roaming?

Roaming is the ability of a portable computer user to communicate continuously while moving freely throughout an area greater than that covered by a single access point. Before using the roaming function, the workstation must make sure that it is the same channel number with the access point of dedicated coverage area.

To achieve true seamless connectivity, the wireless LAN must incorporate a number of different functions. Each node and access point, for example, must always acknowledge receipt of each message. Each node must

maintain contact with the wireless network even when not actually transmitting data. Achieving these functions simultaneously requires a dynamic RF networking technology that links access points and nodes. In such a system, the user's end node undertakes a search for the best possible access to the system. First, it evaluates such factors as signal strength and quality, as well as the message load currently being carried by each access point and the distance of each access point to the wired backbone. Based on that information, the node next selects the right access point and registers its address. Communications between end node and host computer can then be transmitted up and down the backbone.

As the user moves on, the end node's RF transmitter regularly checks the system to determine whether it is in touch with the original access point or whether it should seek a new one. When a node no longer receives acknowledgment from its original access point, it undertakes a new search. Upon finding a new access point, it then re-registers, and the communication process continues.

What is ISM band?

The FCC and their counterparts outside of the U.S. have set aside bandwidth for unlicensed use in the ISM (Industrial, Scientific and Medical) band. Spectrum in the vicinity of 2.4 GHz, in particular, is being made available worldwide. This presents a truly revolutionary opportunity to place convenient high-speed wireless capabilities in the hands of users around the globe.

What is Spread Spectrum?

Spread Spectrum technology is a wideband radio frequency technique developed by the military for use in reliable, secure, mission-critical communications systems. It is designed to trade off bandwidth efficiency for reliability, integrity, and security. In other words, more bandwidth is consumed than in the case of narrowband transmission, but the trade-off produces a signal that is, in effect, louder and thus easier to detect, provided that the receiver knows the parameters of the spread-spectrum signal being broadcast. If a receiver is not tuned to the right frequency, a spread-spectrum signal looks like background noise. There are two main alternatives, Direct Sequence Spread Spectrum (DSSS) and Frequency Hopping Spread Spectrum (FHSS).

What is DSSS? What is FHSS? And what are their differences?

Frequency-Hopping Spread-Spectrum (FHSS) uses a narrowband carrier that changes frequency in a pattern that is known to both transmitter and receiver. Properly synchronized, the net effect is to maintain a single logical channel. To an unintended receiver, FHSS appears to be short-duration impulse noise. Direct-Sequence Spread-Spectrum (DSSS) generates a redundant bit pattern for each bit to be transmitted. This bit pattern is called a chip (or chipping code). The longer the chip, the greater the probability that the original data can be recovered. Even if one or more bits in the chip are damaged during transmission, statistical techniques embedded in the radio can recover the original data without the need for retransmission. To an unintended receiver, DSSS appears as low power wideband noise and is rejected (ignored) by most narrowband receivers.

What is WEP?

WEP is Wired Equivalent Privacy, a data privacy mechanism based on a 64-bit or 128-bit shared key algorithm, as described in the IEEE 802.11 standard.

What is a MAC Address?

The Media Access Control (MAC) address is a unique number assigned by the manufacturer to any Ethernet networking device, such as a network adapter, that allows the network to identify it at the hardware level. For all practical purposes, this number is usually permanent. Unlike IP addresses, which can change every time a computer logs onto the network, the MAC address of a device stays the same, making it a valuable identifier for the network.

How do I reset the Router?

Press the Reset button on the back panel for about five seconds. This will reset the Router to its default settings.

How do I resolve issues with signal loss?

There is no way to know the exact range of your wireless network without testing. Every obstacle placed between the Router and a wireless PC will create signal loss. Lead glass, metal, concrete floors, water and walls will inhibit the signal and reduce range. Start with the Router and your wireless PC in the same room and move it away in small increments to determine the maximum range in your environment.

You may also try using different channels, as this may eliminate interference affecting only one channel.

I have excellent signal strength, but I cannot see my network.

Wireless security is probably enabled on the Router, but not on your wireless adapter (or vice versa). Verify that the same wireless security method and passphrase/keys are being used on all devices of your wireless network.

How many channels/frequencies are available with the Router?

There are eleven available channels, ranging from 1 to 11, in North America, and 13, available in most of Europe. There may be additional channels available in other regions, subject to the regulations of your region and/or country.

If your questions are not addressed here, refer to the Linksys website, www.linksys.com/international.

Appendix B: Wireless Security

Linksys wants to make wireless networking as safe and easy for you as possible. The current generation of Linksys products provide several network security features, but they require specific action on your part for implementation. So, keep the following in mind whenever you are setting up or using your wireless network.

Security Precautions

The following is a complete list of security precautions to take (at least steps 1 through 5 should be followed):

1. Change the default SSID.
2. Disable SSID Broadcast.
3. Change the default password for the Administrator account.
4. Enable MAC Address Filtering.
5. Change the SSID periodically.
6. Use the highest encryption algorithm possible. Use WPA if it is available. Please note that this may reduce your network performance.
7. Change the WEP encryption keys periodically.

For information on implementing these security features, refer to “Chapter 6: Configuring the Wireless-G Broadband Router.”

Security Threats Facing Wireless Networks

Wireless networks are easy to find. Hackers know that in order to join a wireless network, wireless networking products first listen for “beacon messages”. These messages can be easily decrypted and contain much of the network’s information, such as the network’s SSID (Service Set Identifier). Here are the steps you can take:

Change the administrator’s password regularly. With every wireless networking device you use, keep in mind that network settings (SSID, WEP keys, etc.) are stored in its firmware. Your network administrator is the only person who can change network settings. If a hacker gets a hold of the administrator’s password, he, too, can change those settings. So, make it harder for a hacker to get that information. Change the administrator’s password regularly.



NOTE: Some of these security features are available only through the network router or access point. Refer to the router or access point’s documentation for more information.

SSID. There are several things to keep in mind about the SSID:

1. Disable Broadcast
2. Make it unique
3. Change it often

Most wireless networking devices will give you the option of broadcasting the SSID. While this option may be more convenient, it allows anyone to log into your wireless network. This includes hackers. So, don't broadcast the SSID.

Wireless networking products come with a default SSID set by the factory. (The Linksys default SSID is "linksys".) Hackers know these defaults and can check these against your network. Change your SSID to something unique and not something related to your company or the networking products you use.

Change your SSID regularly so that any hackers who have gained access to your wireless network will have to start from the beginning in trying to break in.

MAC Addresses. Enable MAC Address filtering. MAC Address filtering will allow you to provide access to only those wireless nodes with certain MAC Addresses. This makes it harder for a hacker to access your network with a random MAC Address.

WEP Encryption. Wired Equivalent Privacy (WEP) is often looked upon as a cure-all for wireless security concerns. This is overstating WEP's ability. Again, this can only provide enough security to make a hacker's job more difficult.

There are several ways that WEP can be maximized:

1. Use the highest level of encryption possible
2. Use "Shared Key" authentication
3. Change your WEP key regularly

WPA. Wi-Fi Protected Access (WPA) is the newest and best available standard in Wi-Fi security. Two modes are available: Personal (also known as Pre-Shared Key) and Enterprise. Personal gives you a choice of two encryption methods: TKIP (Temporal Key Integrity Protocol), which utilizes a stronger encryption method and incorporates Message Integrity Code (MIC) to provide protection against hackers, and AES (Advanced Encryption System), which utilizes a symmetric 128-Bit block data encryption. Enterprise utilizes a RADIUS (Remote Authentication Dial-In User Service) server for authentication and the use of dynamic TKIP, AES, or WEP.



IMPORTANT: Always remember that each device in your wireless network **MUST** use the same encryption method and encryption key or your wireless network will not function properly.

Wireless-G Broadband Router

WPA Personal. If you do not have a RADIUS server, Select the type of algorithm, TKIP or AES, enter a password in the Pre-Shared key field of 8-64 characters, and enter a Group Key Renewal period time between 0 and 99,999 seconds, which instructs the Router or other device how often it should change the encryption keys.

WPA Enterprise. WPA used in coordination with a RADIUS server. (This should only be used when a RADIUS server is connected to the Router or other device.) First, select the type of WPA algorithm, **TKIP** or **AES**. Enter the RADIUS server's IP Address and port number, along with a key shared between the device and the server. Last, enter a Group Key Renewal period, which instructs the device how often it should change the encryption keys.

RADIUS. WEP used in coordination with a RADIUS server. (This should only be used when a RADIUS server is connected to the Router or other device.) First, enter the RADIUS server's IP Address and port number, along with a key shared between the device and the server. Then, select a WEP key and a level of WEP encryption, and either generate a WEP key through the Passphrase or enter the WEP key manually.

Implementing encryption may have a negative impact on your network's performance, but if you are transmitting sensitive data over your network, encryption should be used.

These security recommendations should help keep your mind at ease while you are enjoying the most flexible and convenient technology Linksys has to offer.

Appendix C: Upgrading Firmware

The Router's firmware is upgraded through the Web-based Utility's Administration tab. Follow these instructions:

1. Download the firmware from Linksys's website at www.linksys.com/international.
2. Extract the firmware file on your computer.
3. Open the Router's Web-based Utility, and click the **Administration** tab.
4. Click **Firmware Upgrade**, and the *Upgrade Firmware* screen will appear.
5. Enter the location of the firmware's file or click the **Browse** button to find the file.
6. Then click the **Upgrade** button and follow the on-screen instructions.



Figure C-1: Upgrade Firmware

Appendix D: Windows Help

Almost Linksys wireless products require Microsoft Windows. Windows is the most used operating system in the world and comes with many features that help make networking easier. These features can be accessed through Windows Help and are described in this appendix.

TCP/IP

Before a computer can communicate with the Router, TCP/IP must be enabled. TCP/IP is a set of instructions, or protocol, all PCs follow to communicate over a network. This is true for wireless networks as well. Your PCs will not be able to utilize wireless networking without having TCP/IP enabled. Windows Help provides complete instructions on enabling TCP/IP.

Shared Resources

If you wish to share printers, folder, or files over your network, Windows Help provides complete instructions on utilizing shared resources.

Network Neighborhood/My Network Places

Other PCs on your network will appear under Network Neighborhood or My Network Places (depending upon the version of Windows you're running). Windows Help provides complete instructions on adding PCs to your network.

Appendix E: Finding the MAC Address and IP Address for Your Ethernet Adapter

This section describes how to find the MAC address for your computer's Ethernet adapter so you can use the MAC filtering and/or MAC address cloning feature of the Router. You can also find the IP address of your computer's Ethernet adapter. This IP address is used for the Router's filtering, forwarding, and/or DMZ features. Follow the steps in this appendix to find the adapter's MAC or IP address in Windows 98, Me, 2000, or XP.

Windows 98SE or Me Instructions

1. Click **Start** and **Run**. In the *Open* field, enter **winipcfg**. Then press the **Enter** key or the **OK** button.
2. When the *IP Configuration* screen appears, select the Ethernet adapter you have connected to the Router via a CAT 5 Ethernet network cable. See Figure E-1.
3. Write down the Adapter Address as shown on your computer screen (see Figure E-2). This is the MAC address for your Ethernet adapter and is shown as a series of numbers and letters.

The MAC address/Adapter Address is what you will use for MAC address cloning or MAC filtering.

The example in Figure E-3 shows the Ethernet adapter's IP address as 192.168.1.100. Your computer may show something different.

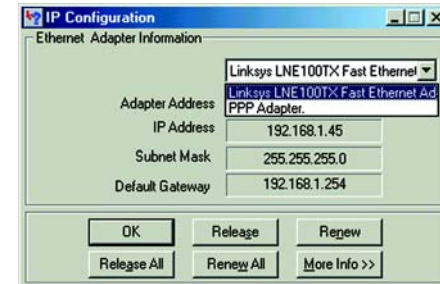


Figure E-1: IP Configuration Screen

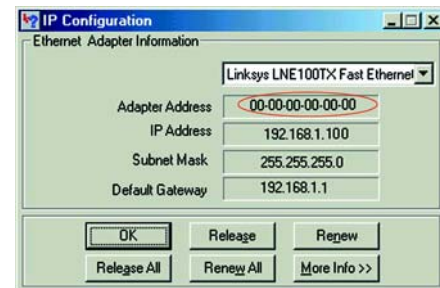


Figure E-2: MAC Address/Adapter Address



Note: The MAC address is also called the Adapter Address.

Windows 2000 or XP Instructions

1. Click **Start** and **Run**. In the *Open* field, enter **cmd**. Press the **Enter** key or click the **OK** button.
2. At the command prompt, enter **ipconfig /all**. Then press the **Enter** key.

Appendix E: Finding the MAC Address and IP Address for Your Ethernet Adapter
Windows 98SE or Me Instructions

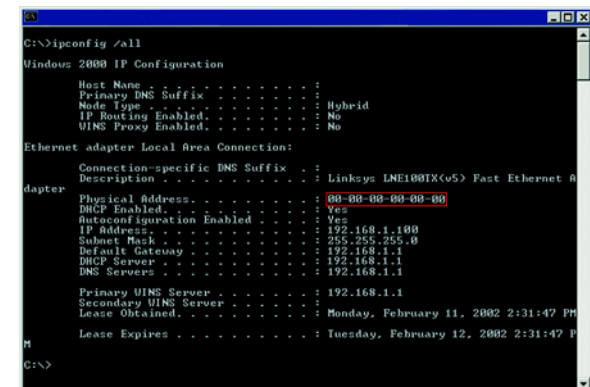


Figure E-3: MAC Address/Physical Address

Wireless-G Broadband Router

3. Write down the Physical Address as shown on your computer screen (Figure E-3); it is the MAC address for your Ethernet adapter. This appears as a series of numbers and letters.

The MAC address/Physical Address is what you will use for MAC address cloning or MAC filtering.



Note: The MAC address is also called the Physical Address.

The example in Figure E-3 shows the Ethernet adapter's IP address as 192.168.1.100. Your computer may show something different.

For the Router's Web-based Utility

For MAC filtering, enter the 12-digit MAC address in this format, XXXXXXXXXXXX, WITHOUT the hyphens. See Figure E-4.

For MAC address cloning, enter the 12-digit MAC address in the *MAC Address* fields provided, two digits per field. See Figure E-5.

Wireless Client MAC List	
MAC 01:	MAC 11:
MAC 02:	MAC 12:
MAC 03:	MAC 13:
MAC 04:	MAC 14:
MAC 05:	MAC 15:
MAC 06:	MAC 16:
MAC 07:	MAC 17:
MAC 08:	MAC 18:
MAC 09:	MAC 19:
MAC 10:	MAC 20:
MAC 21:	MAC 31:
MAC 22:	MAC 32:
MAC 23:	MAC 33:
MAC 24:	MAC 34:
MAC 25:	MAC 35:
MAC 26:	MAC 36:
MAC 27:	MAC 37:
MAC 28:	MAC 38:
MAC 29:	MAC 39:
MAC 30:	MAC 40:

Figure E-4: MAC Address Filter List

LINKSYS
A Division of Cisco Systems, Inc. Firmware Version: v1.30.5 (0002)

Wireless-G Broadband Router WRT54G

Setup | Wireless | Security | Access Restrictions | Applications & Gaming | Administration | Status

MAC Address Clone

Enable Disable

User Defined Entry: 00 | 90 | 4C | 21 | 00 | 2B

Clone Your PC's MAC Address

Save Settings | Cancel Changes

Figure E-5: MAC Address Clone

Appendix F: Glossary

802.11b - A wireless networking standard that specifies a maximum data transfer rate of 11Mbps and an operating frequency of 2.4GHz.

802.11g - A wireless networking standard that specifies a maximum data transfer rate of 54Mbps, an operating frequency of 2.4GHz, and backward compatibility with 802.11b devices.

Access Point - A device that allows wireless-equipped computers and other devices to communicate with a wired network. Also used to expand the range of a wireless network.

Adapter - A device that adds network functionality to your PC.

Ad-hoc - A group of wireless devices communicating directly with each other (peer-to-peer) without the use of an access point.

AES (Advanced Encryption Standard) - A security method that uses symmetric 128-bit block data encryption.

Backbone - The part of a network that connects most of the systems and networks together, and handles the most data.

Bandwidth - The transmission capacity of a given device or network.

Beacon Interval - Data transmitted on your wireless network that keeps the network synchronized.

Bit - A binary digit.

Boot - To start a device and cause it to start executing instructions.

Bridge - A device that connects different networks.

Broadband - An always-on, fast Internet connection.

Browser - An application program that provides a way to look at and interact with all the information on the World Wide Web.

Buffer - A shared or assigned memory area that is used to support and coordinate different computing and networking activities so one isn't held up by the other.

Byte - A unit of data that is usually eight bits long

Wireless-G Broadband Router

Cable Modem - A device that connects a computer to the cable television network, which in turn connects to the Internet.

CSMA/CA (Carrier Sense Multiple Access/Collision Avoidance) - A method of data transfer that is used to prevent data collisions.

CTS (Clear To Send) - A signal sent by a wireless device, signifying that it is ready to receive data.

Daisy Chain - A method used to connect devices in a series, one after the other.

Database - A collection of data that is organized so that its contents can easily be accessed, managed, and updated.

DDNS (Dynamic Domain Name System) - Allows the hosting of a website, FTP server, or e-mail server with a fixed domain name (e.g., www.xyz.com) and a dynamic IP address.

Default Gateway - A device that forwards Internet traffic from your local area network.

DHCP (Dynamic Host Configuration Protocol) - A networking protocol that allows administrators to assign temporary IP addresses to network computers by “leasing” an IP address to a user for a limited amount of time, instead of assigning permanent IP addresses.

DMZ (Demilitarized Zone) - Removes the Router's firewall protection from one PC, allowing it to be “seen” from the Internet.

DNS (Domain Name Server) - The IP address of your ISP's server, which translates the names of websites into IP addresses.

Domain - A specific name for a network of computers.

Download - To receive a file transmitted over a network.

DSL (Digital Subscriber Line) - An always-on broadband connection over traditional phone lines.

DSSS (Direct-Sequence Spread-Spectrum) - Frequency transmission with a redundant bit pattern resulting in a lower probability of information being lost in transit.

DTIM (Delivery Traffic Indication Message) - A message included in data packets that can increase wireless efficiency.

Dynamic IP Address - A temporary IP address assigned by a DHCP server.

Wireless-G Broadband Router

EAP (Extensible Authentication Protocol) - A general authentication protocol used to control network access. Many specific authentication methods work within this framework.

EAP-PEAP (Extensible Authentication Protocol-Protected Extensible Authentication Protocol) - A mutual authentication method that uses a combination of digital certificates and another system, such as passwords.

EAP-TLS (Extensible Authentication Protocol-Transport Layer Security) - A mutual authentication method that uses digital certificates.

Encryption - Encoding data transmitted in a network.

Ethernet - A networking protocol that specifies how data is placed on and retrieved from a common transmission medium.

Finger - A program that tells you the name associated with an e-mail address.

Firewall - A set of related programs located at a network gateway server that protects the resources of a network from users from other networks.

Firmware - The programming code that runs a networking device.

Fragmentation - Breaking a packet into smaller units when transmitting over a network medium that cannot support the original size of the packet.

FTP (File Transfer Protocol) - A protocol used to transfer files over a TCP/IP network.

Full Duplex - The ability of a networking device to receive and transmit data simultaneously.

Gateway - A device that interconnects networks with different, incompatible communications protocols.

Half Duplex - Data transmission that can occur in two directions over a single line, but only one direction at a time.

Hardware - The physical aspect of computers, telecommunications, and other information technology devices.

HTTP (HyperText Transport Protocol) - The communications protocol used to connect to servers on the World Wide Web.

Infrastructure - A wireless network that is bridged to a wired network via an access point.

IP (Internet Protocol) - A protocol used to send data over a network.

IP Address - The address used to identify a computer or device on a network.

Wireless-G Broadband Router

IPCONFIG - A Windows 2000 and XP utility that displays the IP address for a particular networking device.

IPSec (Internet Protocol Security) - A VPN protocol used to implement secure exchange of packets at the IP layer.

ISM band - Radio bandwidth utilized in wireless transmissions.

ISP (Internet Service Provider) - A company that provides access to the Internet.

LAN - The computers and networking products that make up your local network.

LEAP (Lightweight Extensible Authentication Protocol) - A mutual authentication method that uses a username and password system.

MAC (Media Access Control) Address - The unique address that a manufacturer assigns to each networking device.

Mbps (MegaBits Per Second) - One million bits per second; a unit of measurement for data transmission.

mIRC - An Internet Relay Chat program that runs under Windows.

Multicasting - Sending data to a group of destinations at once.

NAT (Network Address Translation) - NAT technology translates IP addresses of a local area network to a different IP address for the Internet.

Network - A series of computers or devices connected for the purpose of data sharing, storage, and/or transmission between users.

NNTP (Network News Transfer Protocol) - The protocol used to connect to Usenet groups on the Internet.

Node - A network junction or connection point, typically a computer or work station.

OFDM (Orthogonal Frequency Division Multiplexing) - Frequency transmission that separates the data stream into a number of lower-speed data streams, which are then transmitted in parallel to prevent information from being lost in transit.

Packet - A unit of data sent over a network.

Passphrase - Used much like a password, a passphrase simplifies the WEP encryption process by automatically generating the WEP encryption keys for Linksys products.

PEAP (Protected Extensible Authentication Protocol) - A mutual authentication method that uses a combination of digital certificates and another system, such as passwords.

Wireless-G Broadband Router

Ping (Packet Internet Groper) - An Internet utility used to determine whether a particular IP address is online.

POP3 (Post Office Protocol 3) - A standard mail server commonly used on the Internet.

Port - The connection point on a computer or networking device used for plugging in cables or adapters.

Power over Ethernet (PoE) - A technology enabling an Ethernet network cable to deliver both data and power.

PPPoE (Point to Point Protocol over Ethernet) - A type of broadband connection that provides authentication (username and password) in addition to data transport.

PPTP (Point-to-Point Tunneling Protocol) - A VPN protocol that allows the Point to Point Protocol (PPP) to be tunneled through an IP network. This protocol is also used as a type of broadband connection in Europe.

Preamble - Part of the wireless signal that synchronizes network traffic.

RADIUS (Remote Authentication Dial-In User Service) - A protocol that uses an authentication server to control network access.

RJ-45 (Registered Jack-45) - An Ethernet connector that holds up to eight wires.

Roaming - The ability to take a wireless device from one access point's range to another without losing the connection.

Router - A networking device that connects multiple networks together.

RTS (Request To Send) - A networking method of coordinating large packets through the RTS Threshold setting.

Server - Any computer whose function in a network is to provide user access to files, printing, communications, and other services.

SMTP (Simple Mail Transfer Protocol) - The standard e-mail protocol on the Internet.

SNMP (Simple Network Management Protocol) - A widely used network monitoring and control protocol.

Software - Instructions for the computer. A series of instructions that performs a particular task is called a "program".

SOHO (Small Office/Home Office) - Market segment of professionals who work at home or in small offices.

SPI (Stateful Packet Inspection) Firewall - A technology that inspects incoming packets of information before allowing them to enter the network.

Wireless-G Broadband Router

Spread Spectrum - Wideband radio frequency technique used for more reliable and secure data transmission.

SSID (Service Set Identifier) - Your wireless network's name.

Static IP Address - A fixed address assigned to a computer or device that is connected to a network.

Static Routing - Forwarding data in a network via a fixed path.

Subnet Mask - An address code that determines the size of the network.

Switch - 1. A data switch that connects computing devices to host computers, allowing a large number of devices to share a limited number of ports. 2. A device for making, breaking, or changing the connections in an electrical circuit.

TCP (Transmission Control Protocol) - A network protocol for transmitting data that requires acknowledgement from the recipient of data sent.

TCP/IP (Transmission Control Protocol/Internet Protocol) - A set of instructions PCs use to communicate over a network.

Telnet - A user command and TCP/IP protocol used for accessing remote PCs.

TFTP (Trivial File Transfer Protocol) - A version of the TCP/IP FTP protocol that has no directory or password capability.

Throughput - The amount of data moved successfully from one node to another in a given time period.

TKIP (Temporal Key Integrity Protocol) - a wireless encryption protocol that provides dynamic encryption keys for each packet transmitted.

Topology - The physical layout of a network.

TX Rate - Transmission Rate.

UDP (User Datagram Protocol) - A network protocol for transmitting data that does not require acknowledgement from the recipient of the data that is sent.

Upgrade - To replace existing software or firmware with a newer version.

Upload - To transmit a file over a network.

URL (Uniform Resource Locator) - The address of a file located on the Internet.

Wireless-G Broadband Router

VPN (Virtual Private Network) - A security measure to protect data as it leaves one network and goes to another over the Internet.

WAN (Wide Area Network)- The Internet.

WEP (Wired Equivalent Privacy) - A method of encrypting network data transmitted on a wireless network for greater security.

WINIPCFG - A Windows 98 and Me utility that displays the IP address for a particular networking device.

WLAN (Wireless Local Area Network) - A group of computers and associated devices that communicate with each other wirelessly.

WPA (Wi-Fi Protected Access) - a wireless security protocol using TKIP (Temporal Key Integrity Protocol) encryption, which can be used in conjunction with a RADIUS server.

Appendix G: Specifications

Standards	IEEE 802.3, IEEE 802.3u, IEEE 802.11g, IEEE 802.11b
Channels	11 Channels (in the Western Hemisphere) 13 Channels (most of Europe and Asia))
Ports	Internet: One 10/100 RJ-45 Port LAN: Four 10/100 RJ-45 Switched Ports One Power Port
Buttons	Reset, SecureEasySetup
Cabling Type	Ethernet Network Cable
LEDs	Power, DMZ, WLAN, LAN (1-4), Internet
RF Power Output	18 dBm
UPnP able/cert	Able
Security Features	Stateful Packet Inspection (SPI) Firewall, Internet Policy
Wireless Security	WEP, Wireless MAC Filtering, Pre-Shared Key (PSK)
Dimensions	186 mm x 48 mm x 200 mm
Unit Weight	0,482 kg
Power	External, 12V DC, 0.5A
Certifications	FCC, IC-03, CE
Operating Temp.	32°F to 104°F

Wireless-G Broadband Router

Storage Temp. -4°F to 158°F

Operating Humidity 10% to 85%, Non-Condensing

Storage Humidity 5% to 90%, Non-Condensing

Appendix H: Warranty Information

Linksys warrants to You that, for a period of three years (the "Warranty Period"), your Linksys Product will be substantially free of defects in materials and workmanship under normal use. Your exclusive remedy and Linksys' entire liability under this warranty will be for Linksys at its option to repair or replace the Product or refund Your purchase price less any rebates. This limited warranty extends only to the original purchaser.

If the Product proves defective during the Warranty Period call Linksys Technical Support in order to obtain a Return Authorization Number, if applicable. BE SURE TO HAVE YOUR PROOF OF PURCHASE ON HAND WHEN CALLING. If You are requested to return the Product, mark the Return Authorization Number clearly on the outside of the package and include a copy of your original proof of purchase. RETURN REQUESTS CANNOT BE PROCESSED WITHOUT PROOF OF PURCHASE. You are responsible for shipping defective Products to Linksys. Linksys pays for UPS Ground shipping from Linksys back to You only. Customers located outside of the United States of America and Canada are responsible for all shipping and handling charges.

ALL IMPLIED WARRANTIES AND CONDITIONS OF MERCHANTABILITY OR FITNESS FOR A PARTICULAR PURPOSE ARE LIMITED TO THE DURATION OF THE WARRANTY PERIOD. ALL OTHER EXPRESS OR IMPLIED CONDITIONS, REPRESENTATIONS AND WARRANTIES, INCLUDING ANY IMPLIED WARRANTY OF NON-INFRINGEMENT, ARE DISCLAIMED. Some jurisdictions do not allow limitations on how long an implied warranty lasts, so the above limitation may not apply to You. This warranty gives You specific legal rights, and You may also have other rights which vary by jurisdiction.

This warranty does not apply if the Product (a) has been altered, except by Linksys, (b) has not been installed, operated, repaired, or maintained in accordance with instructions supplied by Linksys, or (c) has been subjected to abnormal physical or electrical stress, misuse, negligence, or accident. In addition, due to the continual development of new techniques for intruding upon and attacking networks, Linksys does not warrant that the Product will be free of vulnerability to intrusion or attack.

TO THE EXTENT NOT PROHIBITED BY LAW, IN NO EVENT WILL LINKSYS BE LIABLE FOR ANY LOST DATA, REVENUE OR PROFIT, OR FOR SPECIAL, INDIRECT, CONSEQUENTIAL, INCIDENTAL OR PUNITIVE DAMAGES, REGARDLESS OF THE THEORY OF LIABILITY (INCLUDING NEGLIGENCE), ARISING OUT OF OR RELATED TO THE USE OF OR INABILITY TO USE THE PRODUCT (INCLUDING ANY SOFTWARE), EVEN IF LINKSYS HAS BEEN ADVISED OF THE POSSIBILITY OF SUCH DAMAGES. IN NO EVENT WILL LINKSYS' LIABILITY EXCEED THE AMOUNT PAID BY YOU FOR THE PRODUCT. The foregoing limitations will apply even if any warranty or remedy provided under this Agreement fails of its essential purpose. Some jurisdictions do not allow the exclusion or limitation of incidental or consequential damages, so the above limitation or exclusion may not apply to You.

This Warranty is valid and may be processed only in the country of purchase.

Please direct all inquiries to: Linksys, P.O. Box 18558, Irvine, CA 92623.

Appendix I: Regulatory Information

Compliance Information for 2.4-GHz Wireless Products Relevant to the EU and Other Countries
Following the EU Directive 1999/5/EC (R&TTE Directive)

Declaration of Conformity with Regard to the EU Directive 1999/5/EC (R&TTE Directive)

NOTE: For all products, the Declaration of Conformity is available through one or more of these options:

- A pdf file is included on the product's CD.
- A print copy is included with the product.
- A pdf file is available on the product's webpage. Visit www.linksys.com/international and select your country or region. Then select your product.

If you need any other technical documentation, see the “Technical Documents on www.linksys.com/international” section, as shown later in this appendix.

The following standards were applied during the assessment of the product against the requirements of the Directive 1999/5/EC:

- Radio: EN 300 328
- EMC: EN 301 489-1, EN 301 489-17
- Safety: EN 60950

CE Marking

For the Linksys Wireless-B and Wireless-G products, the following CE mark, notified body number (where applicable), and class 2 identifier are added to the equipment.

CE 0560 ⓘ or CE 0678 ⓘ or CE ⓘ

Check the CE label on the product to find out which notified body was involved during the assessment.

Česky [Czech]:	Toto zařízení je v souladu se základními požadavky a ostatními odpovídajícími ustanoveními Směrnice 1999/5/EC.
Dansk [Danish]:	Dette udstyr er i overensstemmelse med de væsentlige krav og andre relevante bestemmelser i Direktiv 1999/5/EF.
Deutsch [German]:	Dieses Gerät entspricht den grundlegenden Anforderungen und den weiteren entsprechenden Vorgaben der Richtlinie 1999/5/EU.
Eesti [Estonian]:	See seade vastab direktiivi 1999/5/EÜ olulistele nõuetele ja teistele asjakohastele sätetele.
English:	This equipment is in compliance with the essential requirements and other relevant provisions of Directive 1999/5/EC.
Español [Spanish]:	Este equipo cumple con los requisitos esenciales así como con otras disposiciones de la Directiva 1999/5/CE.
Ελληνική [Greek]:	Αυτός ο εξοπλισμός είναι σε συμμόρφωση με τις ουσιαστικές απαιτήσεις και άλλες σχετικές διατάξεις της Οδηγίας 1999/5/ΕΚ.
Français [French]:	Cet appareil est conforme aux exigences essentielles et aux autres dispositions pertinentes de la Directive 1999/5/EC.
Íslenska [Icelandic]:	Þetta tæki er samkvæmt grunnkröfum og öðrum viðeigandi ákvæðum Tilskipunar 1999/5/EC.
Italiano [Italian]:	Questo apparato è conforme ai requisiti essenziali ed agli altri principi sanciti dalla Direttiva 1999/5/CE.
Latviski [Latvian]:	Šī iekārta atbilst Direktīvas 1999/5/EK būtiskajām prasībām un citiem ar to saistītajiem noteikumiem.
Lietuvių [Lithuanian]:	Šis įrenginys tenkina 1999/5/EB Direktyvos esminius reikalavimus ir kitas šios direktyvos nuostatas.
Nederlands [Dutch]:	Dit apparaat voldoet aan de essentiële eisen en andere van toepassing zijnde bepalingen van de Richtlijn 1999/5/EC.
Malti [Maltese]:	Dan l-apparat huwa konformi mal-htigiet essenzjali u l-provedimenti l-oħra rilevanti tad-Direttiva 1999/5/EC.
Magyar [Hungarian]:	Ez a készülék teljesíti az alapvető követelményeket és más 1999/5/EK irányelvben meghatározott vonatkozó rendelkezéseket.

National Restrictions

This product may be used in all EU countries (and other countries following the EU directive 1999/5/EC) without any limitation except for the countries mentioned below:

Ce produit peut être utilisé dans tous les pays de l'UE (et dans tous les pays ayant transposés la directive 1999/5/CE) sans aucune limitation, excepté pour les pays mentionnés ci-dessous:

Questo prodotto è utilizzabile in tutte i paesi EU (ed in tutti gli altri paesi che seguono le direttive EU 1999/5/EC) senza nessuna limitazione, eccetto per i paesi menzionati di seguito:

Das Produkt kann in allen EU Staaten ohne Einschränkungen eingesetzt werden (sowie in anderen Staaten die der EU Direktive 1999/5/CE folgen) mit Ausnahme der folgenden aufgeführten Staaten:

Belgium

The Belgian Institute for Postal Services and Telecommunications (BIPT) must be notified of any outdoor wireless link having a range exceeding 300 meters. Please check <http://www.bipt.be> for more details.

Draadloze verbindingen voor buitengebruik en met een reikwijdte van meer dan 300 meter dienen aangemeld te worden bij het Belgisch Instituut voor postdiensten en telecommunicatie (BIPT). Zie <http://www.bipt.be> voor meer gegevens.

Les liaisons sans fil pour une utilisation en extérieur d'une distance supérieure à 300 mètres doivent être notifiées à l'Institut Belge des services Postaux et des Télécommunications (IBPT). Visitez <http://www.ibpt.be> pour de plus amples détails.

Norsk [Norwegian]:	Dette utstyret er i samsvar med de grunnleggende krav og andre relevante bestemmelser i EU-direktiv 1999/5/EF.
Polski [Polish]:	Urządzenie jest zgodne z ogólnymi wymaganiami oraz szczególnymi warunkami określonymi Dyrektywą UE: 1999/5/EC.
Português [Portuguese]:	Este equipamento está em conformidade com os requisitos essenciais e outras provisões relevantes da Directiva 1999/5/EC.
Slovensko [Slovenian]:	Ta naprava je skladna z bistvenimi zahtevami in ostalimi relevantnimi pogoji Direktive 1999/5/EC.
Slovensky [Slovak]:	Toto zariadenie je v zhode so základnými požiadavkami a inými príslušnými nariadeniami direktív: 1999/5/EC.
Suomi [Finnish]:	Tämä laite täyttää direktiivin 1999/5/EY olennaiset vaatimukset ja on siinä asetettujen muiden laitetta koskevien määräysten mukainen.
Svenska [Swedish]:	Denna utrustning är i överensstämmelse med de väsentliga kraven och andra relevanta bestämmelser i Direktiv 1999/5/EC.

Wireless-G Travel Router with SpeedBooster

France

In case the product is used outdoors, the output power is restricted in some parts of the band. See Table 1 or check <http://www.arcep.fr/> for more details.

Dans la cas d'une utilisation en extérieur, la puissance de sortie est limitée pour certaines parties de la bande. Reportez-vous à la table 1 ou visitez <http://www.arcep.fr/> pour de plus amples détails.

Table 1: Applicable Power Levels in France

Location	Frequency Range (MHz)	Power (EIRP)
Indoor (No restrictions)	2400-2483.5	100 mW (20 dBm)
Outdoor	2400-2454 2454-2483.5	100 mW (20 dBm) 10 mW (10 dBm)

Italy

This product meets the National Radio Interface and the requirements specified in the National Frequency Allocation Table for Italy. Unless operating within the boundaries of the owner's property, the use of this 2.4 GHz Wireless LAN product requires a 'general authorization'. Please check with <http://www.comunicazioni.it/it/> for more details.

Questo prodotto è conforme alla specifiche di Interfaccia Radio Nazionali e rispetta il Piano Nazionale di ripartizione delle frequenze in Italia. Se non viene installato all'interno del proprio fondo, l'utilizzo di prodotti Wireless LAN a 2.4 GHz richiede una "Autorizzazione Generale". Consultare <http://www.comunicazioni.it/it/> per maggiori dettagli.

Product Usage Restrictions

This product is designed for indoor usage only. Outdoor usage is not recommended. Any modification or alteration to the product shall void the warranty (see the Warranty Information appendix in this User Guide).

This product is designed for use with the standard, integral or dedicated (external) antenna(s) that is/are shipped together with the equipment. However, some applications may require the antenna(s) to be separated from the product and installed remotely from the device by using extension cables. For these applications, Linksys offers an R-SMA extension cable (AC9SMA) and an R-TNC extension cable (AC9TNC). Both of these cables are 9 meters long and have a cable loss (attenuation) of 5 dB. To compensate for the attenuation, Linksys also offers higher gain antennas, the HGA7S (with R-SMA connector) and HGA7T (with R-TNC connector). These antennas have a gain of 7 dBi and may only be used with either the R-SMA or R-TNC extension cable.

Combinations of extension cables and antennas resulting in a radiated power level exceeding 100 mW EIRP are illegal.

Power Output of Your Device

To comply with your country's regulations, you may have to change the power output of your wireless device. Proceed to the appropriate section for your device.

Note: The power output setting may not be available on all wireless products. For more information, refer to the documentation on your product's CD or <http://www.linksys.com/international>.

Wireless Adapters

Wireless adapters have the power output set to 100% by default. Maximum power output on each adapter does not exceed 20 dBm (100 mW); it is generally 18 dBm (64 mW) or below. If you need to alter your wireless adapter's power output, follow the appropriate instructions for your computer's Windows operating system:

Windows XP

1. Double-click the **Wireless** icon in your desktop's system tray.
2. Open the *Wireless Network Connection* window.
3. Click the **Properties** button.
4. Select the **General** tab, and click the **Configure** button.
5. In the *Properties* window, click the **Advanced** tab.
6. Select **Power Output**.
7. From the pull-down menu on the right, select the wireless adapter's power output percentage.

Windows 2000

1. Open the **Control Panel**.
2. Double-click **Network and Dial-Up Connections**.
3. Select your current wireless connection, and select **Properties**.
4. From the *Properties* screen, click the **Configure** button.
5. Click the **Advanced** tab, and select **Power Output**.
6. From the pull-down menu on the right, select the wireless adapter's power setting.

If your computer is running Windows Millennium or 98, then refer to Windows Help for instructions on how to access the advanced settings of a network adapter.

Wireless Access Points, Routers, or Other Wireless Products

If you have a wireless access point, router or other wireless product, use its Web-based Utility to configure its power output setting (refer to the product's documentation for more information).

Technical Documents on www.linksys.com/international

Follow these steps to access technical documents:

1. Browse to <http://www.linksys.com/international>.
2. Click the region in which you reside.
3. Click the name of the country in which you reside.
4. Click **Products**.
5. Click the appropriate product category.
6. Select a product.
7. Click the type of documentation you want. The document will automatically open in PDF format.

Note: If you have questions regarding the compliance of these products or you cannot find the information you need, please contact your local sales office or visit <http://www.linksys.com/international> for more details.

FCC STATEMENT

This product has been tested and complies with the specifications for a Class B digital device, pursuant to Part 15 of the FCC Rules. These limits are designed to provide reasonable protection against harmful interference in a residential installation. This equipment generates, uses, and can radiate radio frequency energy and, if not installed and used according to the instructions, may cause harmful interference to radio communications. However, there is no guarantee that interference will not occur in a particular installation. If this equipment does cause harmful interference to radio or television reception, which is found by turning the equipment off and on, the user is encouraged to try to correct the interference by one or more of the following measures:

- Reorient or relocate the receiving antenna
- Increase the separation between the equipment or devices
- Connect the equipment to an outlet other than the receiver's

Consult a dealer or an experienced radio/TV technician for assistance

INDUSTRY CANADA STATEMENT

This device complies with Industry Canadian ICES-003 and RSS210 rules.

Cet appareil est conforme aux normes NMB-003 et RSS210 d'Industry Canada.

Appendix J: Contact Information

Need to contact Linksys?

Visit us online for information on the latest products and updates to your existing products at:
<http://www.linksys.com/international>

If you experience problems with any Linksys product, you can e-mail us at:

In Europe	E-mail Address
Austria	support.at@linksys.com
Belgium	support.be@linksys.com
Denmark	support.dk@linksys.com
France	support.fr@linksys.com
Germany	support.de@linksys.com
Italy	support.it@linksys.com
Netherlands	support.nl@linksys.com
Norway	support.no@linksys.com
Portugal	support.pt@linksys.com
Spain	support.es@linksys.com
Sweden	support.se@linksys.com
Switzerland	support.ch@linksys.com
United Kingdom & Ireland	support.uk@linksys.com

Outside of Europe	E-mail Address
Latin America	support.portuguese@linksys.com or support.spanish@linksys.com
U.S. and Canada	support@linksys.com

Wireless-G Travel Router with SpeedBooster

Outside of Europe	E-mail Address
Middle East & Africa	support.mea@linksys.com (English only)
Asia Pacific	asiasupport@linksys.com (English only)